

Explore PADDINGTON

AUTUMN/WINTER 2018/19

PLUS

Try ice karting
Make gingerbread
Watch a film on a boat

Lazy shade OF WINTER

Embrace the season at a cosy spot with
real fires, heaters and blankets along the canal

WHAT'S ON | WHAT'S NEW | FESTIVE FUN | VOLUNTEER

NO. 3
CANALSIDE WALK

LONDON W2

Waterfront living with the world at your feet

Completing Spring 2020

CGI is indicative only



EuropeanLand



+44 (0)20 7087 5111

| sales@canalsidewalk.com

| canalsidewalk.com

CONTENTS

Autumn/Winter 2018/19

4 MAP

Use our illustrated map to find your way around

6 WHAT'S ON

By day, you can make your own truffled Brie or eat street food; by night, why not join a pub quiz, catch some comedy or listen to jazz?

8 WHAT'S NEW

From poké and pasta joints to a barbers and a boathouse, discover the new businesses opening in Paddington

10 LOCALS' ITINERARY

A vegan charcoal croissant from Coco di Mama should set you up for a day of Pilates and pool

11 VISITORS' ITINERARY

Go-karting on ice, human curling and karaoke is just another day for you, right?

12 ON THE WATER

Stroll along the canal and drop into cosy restaurants, bars and pubs along the way

16 FESTIVE FUN

Christmas wouldn't be the same without ice skating, a Santa's grotto and *The Snowman*.

Enjoy all this and more at Hyde Park Winter Wonderland



20 EAT

Nothing's better than a plate of comfort food on a chilly day. So why not put on a chunky knit and sit down to sausage and mash or baked beans on toast?

22 DRINK

See in the New Year – or any weekend – over some warming mulled wine, a spicy cocktail or a dram of whisky at one of these pubs and bars

26 GIVE

Find out how you can help the Paddington community by giving your time, money or presents to local charities

28 LIVE

Learn more about the new homes coming to Paddington, and why these residents have chosen to make W2 their base

30 WORK

Meet local workers to discover their favourite lunchtime hideouts and after-work drinking spots, and find out different ways to make your business greener

32 SLEEP

Discover four local hotels, three of which have recently rebranded – including the glitzy boutique hotel, The Chilworth, on Westbourne Terrace

GET IN TOUCH

✉ magazine@paddingtonnow.co.uk #explorepaddington

🐦 @inpaddington 📺 InPaddington 📘 InPaddington 📺 www.youtube.com/user/PaddingtonLondon

🌐 Listings: www.thisispaddington.com 🌐 Business: www.paddingtonnow.co.uk

Editor Sarah Riches Sub editors Anna Frame, Alice Snape Production Dave Weeks Art Tim Benton, Suzette Scoble Sales Charlotte Johnson-Last 020 7611 7892

charlotte.johnson@morriseurope.com Published by Morris Visitor Publications, Samuel House, St Alban's St, SW1Y 4SQ, 020 7242 5222. www.mvplondon.uk Printed by Elle Media Group

YOUR AREA MAP

Welcome to the Autumn/Winter edition of *Explore Paddington*, brought to you by *PaddingtonNow Business Improvement District* and *The Paddington Partnership*

Heard about hygge? It's the Danish word that encapsulates all things cosy: a warm atmosphere, hearty food and friends and family – in essence, it's about enjoying the good life.

So for this issue, *Explore Paddington* has gone hygge. It's got spicy cocktails, comfort food, fires, blankets and heaters.

That's not to say I'm avoiding the chill. In fact, I'm embracing it as Hyde Park Winter Wonderland returns. I can't wait to join an ice sculpting class and watch world champion skaters in *Peter Pan on Ice*.

You can take to the ice yourself on the UK's biggest outdoor rink, or head to Queens to go-kart on ice or try human curling: you become the puck as you shoot across the rink on an oversized 'doughnut'.

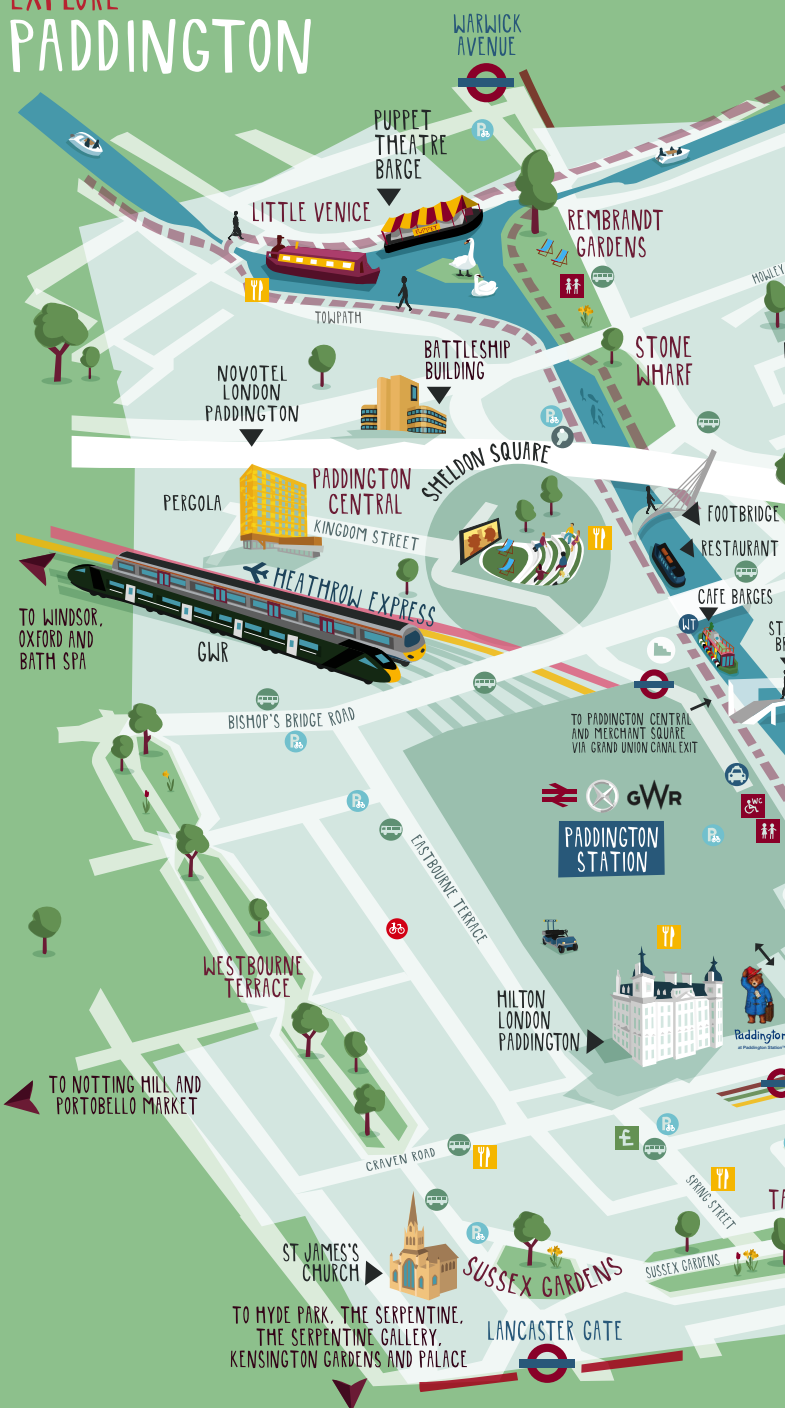
That's not the only thing that's new in W2. Exciting additions include The Boathouse London, which hosts yoga and screenings; and HUCKSTER, with its bars, restaurants, karaoke and a Tube carriage you can hire – just in case you want to practice your pole-dancing moves...

To find out what else is happening this season, read on. And feel free to get in touch – I'm just a click away.

Sarah

Sarah Riches
Editor

EXPLORE PADDINGTON





The Paddington Partnership

Visit thisispaddington.com or follow us on Twitter @inpaddington for more information about our trails, events, places to eat and things to do in Paddington.

© The Paddington Partnership, November 2018

PADDINGTON™ and PADDINGTON BEAR™ © Paddington and Company Limited/Studiocanal S.A.S. 2018. Paddington Bear™, Paddington™ and PB™ are trademarks of Paddington and Company Limited. Licensed on behalf of Studiocanal S.A.S. by Copyrights Group.

WHAT'S ON



IF YOU'RE A FOODIE...

ONGOING Browse food stalls at Kerb. Options vary, but may include flatbread from Luxury Flats; bavette steak rolls from Growlers and Dosa Deli's crispy dosas. Noon-2pm; every other Wed. *Sheldon Square, W2 6PY. 020 3204 4970. www.kerbfood.com.*

ONGOING Merchant Square's World Food Market has a number of street food traders every week. Sample Greek, Italian, Asian – or any other cuisine from around the world that takes your fancy. To 20 Dec & from 5 Feb 2019. 11am-3pm; Tue & Thu. *Merchant Square, W2 1JS. 020 7298 2455. www.merchantsquare.co.uk/eat-drink.*

ONGOING If you love surprises, then Truck Stop Today will suit you. Vendors vary but they're all veggie, vegan or pescatarian. Look out for stew from Ladle, dahl from En Root and curry from Yim Thai. 11.30am-2.30pm; Mon-Fri. *2 Eastbourne Terrace, W2 6LG. 07803 606201. www.truckstoptoday.com.*

ONGOING Join one of Tool Shed @ W2's regular

classes to learn how to use knives properly and cook with kitchen gadgets (10am, 14 Nov, £120) or slow cook (29-30 Nov). The shop also hosts supper clubs (15 Nov). *39 Connaught St, W2 2AZ. 0800 678 5001. www.sousvidetools.com/w2.*

REGULAR The Cleveland Arms has a truffle menu (17 Nov), Thanksgiving dinner (22 Nov) and charcuterie night (27 Nov). *28 Chilworth St, W2 6DT. 020 7706 1979. www.theclevelandarms.com.*

22 Nov & 18 Dec Who doesn't love cheese? Join a fondue night (7pm-9pm; 22 Nov) or make your own truffled Brie (6.30pm-8.30pm; 18 Dec) at Buchanans Cheesemonger. £60. *5a Porchester Place, W2 2BS. 020 3441 8010. www.buchananscheesemonger.com.*

IF YOU'RE CULTURAL...

ONGOING The Frontline Club hosts regular film screenings, photography exhibitions and talks on news and current affairs with famous authors. *13 Norfolk Place, W2 1QJ. 020 7479 8940. www.frontlineclub.com.*

Wed, Fri-Sat Watch award-winning architect Thomas Heatherwick's Rolling Bridge in action, while the Fan Bridge resembles a Japanese fan when its five beams open. See website for opening times. *Merchant Square, W2 1JS. www.merchantsquare.co.uk.*

6 Nov Listen to critically acclaimed Scottish guitarist James Akers play music by 19th-century female composers in this lunchtime concert. 1pm. Free. *St James's Church, Sussex Gardens, W2 3UD. 020 7262 9976. www.stjamespaddington.org.uk.*

11 Nov Listen to readings and a 12-strong orchestra perform classical music in a commemorative service at St John's Church which honours the World War I centenary. 6pm. Free. *St John's Hyde Park, W2 2QD. 020 7262 1732. www.stjohns-hydepark.com.*

16 Nov Watch the 1920 silent horror film *The Cabinet of Dr Caligari*, followed by drinks at St John's Church. Robert Wiene's horror classic has been described as 'cinema's first cult film'. 7pm. About £5. *St John's Hyde Park, W2 2QD. 020 7262 1732. www.stjohns-hydepark.com.*





IF YOU'RE A NIGHT OWL...

MONTHLY Cork & Bottle's head chef Anthony Greenan creates a three-course dinner each month, paired with European wine themed by region, vineyard or Champagne house. Global wine producers lead the tastings. £45-£55. 27 Spring St, W2 1JA. 020 7262 1485. www.thecorkandbottle.co.uk.

Tue Round up a team of up to five for a weekly quiz with a cash jackpot at The Victoria. 9pm. £2 per person. 10a Strathearn Place, W2 2NH. 020 7724 1191. www.victoriapaddington.co.uk.

MONTHLY On the second Monday of every month, watch a film at The Cleveland Arms followed by a quiz for film fans. 7pm. 28 Chilworth St, W2 6DT. 020 7706 1759. www.theclevelandarms.com.

Thu Listen to jazz in the evening at Pizza Express. Free. 3 Merchant Square, W2 1BF. 020 7706 8000. www.pizzaexpress.com.

MONTHLY Comedian Miles Crawford hosts two hours of stand-up comedy in

Cork & Bottle's private downstairs room. The proceedings support Friends of St Mary's. £8. 27 Spring St, W2 1JA. 020 7262 1485.

www.thecorkandbottle.co.uk.

MONTHLY Chill out to jazz, folk and indie by up-and-coming guitarists and singer-songwriters at The Cleveland Arms. 7pm. Free. 28 Chilworth St, W2 6DT. 020 7706 1759.

www.theclevelandarms.com.

Sat Listen to live Greek music played on a bouzouki at It's All Greek to Me. 9pm. 101 Praed St, W2 1NT. 020 7402 5505. www.itsallgreekto.me.

MONTHLY Join a quiz dinner at Cork & Bottle with rounds such as 'guess the cheese' and 'name that grape', with prizes. £25. 27 Spring St, W2 1JA. 020 7262 1485.

www.thecorkandbottle.co.uk.

13 Nov Join in retro party games in Honey's Happening, a play set in the '60s. £13.50. 7.30pm. Canal Cafe Theatre, 2 Delamere Terrace, W2 6ND. 020 7289 6054. www.canalcafetheatre.com.



IF YOU'RE THE FAMILY TYPE...

13-14 Nov Save up to 75 per cent on children's books, classic novels and cookbooks as well as toys, stationery and gifts at The Book People. 5 Merchant Square, W2 1JS. 0345 606 3202.

www.merchantsquare.co.uk.

Dec Puppeteers manipulate hand-carved marionettes to bring mischievous Brer Rabbit to life in *Mr Rabbit Meets Brer Santa* at Puppet Theatre Barge. Check times and prices. Blomfield Rd, W9 2PF. 020 7249 6876. www.puppetbarge.com.

3 Feb Watch a 10km London Winter Run, which starts in Trafalgar Square and finishes on Whitehall by Downing Street. Funds raised go to Imperial Health Charity, which supports five hospitals, including St Mary's in Paddington. You can choose which ward or hospital to donate to. Start times are between 9am and 11am. 020 3857 9854. www.imperialcharity.org.uk.

18 Apr Go on an Easter egg hunt around Merchant Square (18 Apr). You might win prizes including Champagne, vouchers for local shops and train tickets. Noon-2pm. Free. Merchant Square, W2 1JS. 020 7298 2455. www.merchantsquare.co.uk.

WHAT'S NEW

Who doesn't welcome a change of scenery? Keep up to date with new businesses and discover which ones are opening soon



Department of Coffee and Social Affairs

Pall Mall Barbers

QUICK BITES

Lords of Poké has served summer in a bowl since August 2018. Its design-your-own Hawaiian poké is ideal for lunch or a post-Christmas diet. Simply order rice or courgette topped with seaweed, mango or pineapple, then add yuzu prawns, miso salmon or pulled jackfruit. Once tried, there's no going back to your old tomato/cheese combo. 2 Kingdom St, W2 6BD. 020 7289 3937. www.lordsofpoke.com.

Like Lords of Poké, **Coco di Mama** also opened in Paddington Central in August 2018. Whether you want a takeaway croissant en route to work or to sit in (or out) over sandwiches, pasta or Italian meatball broth, it serves what you crave. The Paddington branch has plans to introduce Funk 'N' Grind classes, so you can learn latte art and how to froth milk to a funky playlist – watch this space for more. 2 Kingdom St, W2 6BD. 020 7286 0673. www.cocodimama.co.uk.

Coffee lovers now have a choice at Paddington Central, as **Department of Coffee and Social Affairs** opened in September 2018. The London-based chain – which has branches in the US – serves single-origin coffee, loose-leaf tea, porridge and trendy “avo toast” to cool beats. 2 Kingdom St, W2 6BD. www.departmentofcoffee.com.

Fancy an organic Fairtrade coffee from a hatch on a Moto Guzzi motorbike? The new concept from **Caffé Torelli**, which opened in September, serves just that. *Fountain at Merchant Square*, W2. www.merchantsquare.co.uk.

Mille Pâtisserie opened in September, too. Every day, chef Yulei Yang layers Kyoto matcha, Nagoya sesame, Arabica coffee, Valrhona chocolate or Sicilian lemon crème between crêpes to create deliciously light cakes. 8a Spring St, W2 3RA. 020 7018 7667. www.patisseriemille.com.

La Suite West hotel near Hyde Park, meanwhile, opened an on-trend vegan café, **Café Forty One**, in July. Its head chef Clarisse Flon serves black bean porridge; brioche with almonds, vegan honey and roasted strawberries; mushroom pie, mash and vegan gravy; and pavlova. 41-51 Inverness Terrace, W2 3JN. 020 7313 8484. www.lasuitewest.com.

RESTAURANTS AND BARS

For a taste of Americana, swing by **The Rack House**, Hilton London Metropole's new bar, which is decorated with Jim Beam bottle light fittings, barrels and murals. It serves 12 types of bourbon – whiskey made from corn and aged in charred oak barrels – alongside Jim Beam bourbon-glazed wings with blue cheese, mac and cheese, hot dogs and key lime pie. BT Sport and Sky Sports are shown on TVs and a projector. 225 Edgware Rd, W2 1JU. 020 7402 4141. www.3.hilton.com.



Forget running through the rain or racking up Uber bills – now you can dine and party under one roof at **HUCKSTER**, which opened in Paddington Central in June 2018. Try buttermilk-fried chicken from True Burgers, manuka honey and 'nduja at Crooked Peel Pizza Co, and chips at Rumbi. Finish with Hong Kong Bubble Gods' ice-cream waffle cones – complete with hundreds and thousands. Burn the calories by dancing to '80s tunes spun by a DJ, or by twirling around poles in a New York subway carriage, which you can hire. 4 Kingdom St, W2 6BD. 020 7846 1985. www.hucksterlondon.co.uk.

SHOPS

If you're looking for on-the-go snacks, then pass by **M&S Simply Food** near The Rolling Bridge, which opened in June, for pastries from its bakery, coffee or pizza. Sun's out? Then visit the salad bar. 35 North Wharf Rd, W2 1NW. 020 3961 9789. www.marksandspencer.com.

Alternatively, you can also pop into **Co-op Food**, which opened in April 2018 in Merchant Square. Nip in for basics, bread from the bakery and hot dishes, or take advantage of its cash machine. 4 Merchant Square, W2 1BF. 020 7262 2834.

www.co-operativefood.co.uk.

Connaught Village has a clutch of new shops, most of which opened in summer 2018. Buy face masks from Vitamasques, women's clothes at Judy Wu and Kindare, or culinary equipment, from blow torches to food dehydrators, at Toolshed @ W2. Wannabe chefs can learn how to use kitchen gadgets, too. **Vitamasques**, 12 Porchester Place, W2 2BS. 020 7262 6063. www.vitamasques.com. **Judy Wu**, 9 Porchester Place, W2 2BS. 020 3742 0827. www.judywu.co.uk. **Kindare**, 30 Connaught St, W2 2AF. 020 7402 9016. www.connaught-village.co.uk/kindare. **Toolshed @ W2**, 39 Connaught St, W2 2AZ. 01524 770060. www.sousvidetools.com/w2.

ACTIVITIES

Gents, treat yourself to a wet shave or head massage at **Pall Mall Barbers**, which opened in Sheldon Square in July 2018. The original branch, near Trafalgar Square, was founded in 1896, and the company is expanding to New York soon – so you're in safe hands. You can buy haircare and shaving products, too. 23 Sheldon Square, W2 6EY. 020 7112 2373. www.pallmallbarbers.com.

Since July 2018, the 18m-long barge, **The Boathouse London**, has been moored at the Floating Pocket Park. Its Scandinavian decor features grey tones, reclaimed ash-wood panelling and plants, and it brims with light thanks to skylights and portholes.

The vessel is available to rent as a hotel for up to four guests, or for film screenings, yoga brunches or supper clubs. Book a stay here and tuck into a Daylesford hamper of bread, butter and jam on the roof or in a swing chair. On a sunny day, explore the canal on your own rowing boat or with the two bikes that are provided, then bathe in a roll-top bath. Celebrating? Then opt for a Champagne reception or hire a captain, chef, driver or yoga teacher (extra). The company plans to expand across London and Europe – so why not book a night here (from £220) and be among the first to try it? *Merchant Square, W2 1JX. 020 8237 9203. www.boathouselondon.co.uk.*



Coco di Mama



The Boathouse London



Mille Pâtisserie



HUCKSTER

Don't forget to share your photos with us!

✉ magazine@paddingtonnow.co.uk #explorepaddington
 @inpaddington InPaddington InPaddington

Locals: plan your day

Who needs to trek to east London to experience the hipster scene? You can try vegan charcoal croissants and small-scale craft beer in Paddington, after all



9.30AM Start your day at the latest branch of **Coco di Mama**, which is wildly popular for good reason. On-trend pasta straws? Tick. Latte art? Yep. Coffee roasted in Dalston and ground to order? That, too. If you want something light, grab a vegan charcoal croissant. Need hot food? Then fill up on porridge with coconut milk, banana, honey, caramelised pecans and dark chocolate; a bacon baguette or pork and sage sausages. You can eat outside, too. 2 Kingdom St, W2 6BD. 020 7286 0673. www.cocodimama.co.uk.



11.30AM Work off those extra winter pounds at **Yujin Choi Pilates**. Slide your way to slimness on a reformer and stretch over an arch-shaped ladder barrel. 13 Praed Mews, W2 1QY. 07714 691277. www.yujinchoipilates.com.



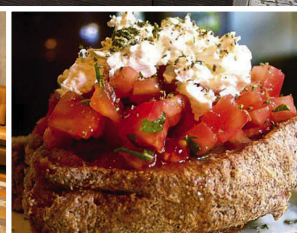
12.30PM Enjoy a relaxing lunch overlooking the canal at **Smith's Bar & Grill**, which serves soup and hearty meals such as sausage and mash with red onion gravy. If the sun's out, head to the terrace, which is covered with parasols. 25 Sheldon Square, W2 6EY. 020 7286 9458. www.smithsbarandgrill.co.uk.

3PM Pop into **Heist Bank** with your pals for a round of pool or a game of table tennis. 5 North Wharf Rd, W2 1LA. 020 7723 8080. www.heistbank.com.

7PM Meet friends for dinner and tuck into sharing dishes at **It's All Greek to Me**. Start with halloumi, sautéed prawns and a baked feta filo pastry that's drizzled with honey and sprinkled with sesame seeds – just save space for souvlaki (grilled meat). There's live music every Saturday night. 101 Praed St, W2 1NT. 020 7402 5505. www.itsallgreektome.london.

9PM Feeling adventurous? Then ask staff at **The Draft House** what they recommend. They may suggest Pressure Drop's Wu Gang Chops the Tree, which has notes of cloves, or Neon Raptor's Don't Forget Your Amethyst, which tastes of cacao. Smokers can sit on the terrace overlooking the Floating Pocket Park in Paddington Basin. Unit 1, West End Quay, W2 1JX. 020 7723 5106. www.drafthouse.co.uk.

Have you visited one of these venues? Then show us your pics! magazine@paddingtonnow.co.uk #explorepaddington [Twitter](#) @inpaddington [Instagram](#) InPaddington [Facebook](#) InPaddington



Perfect for work drinks

Great for fitness fans

Visitors: plan your day

For a real feel of the city, explore the neighbourhood around your hotel and discover local gems from boxing classes and go-karting on ice to a huge pergola bar

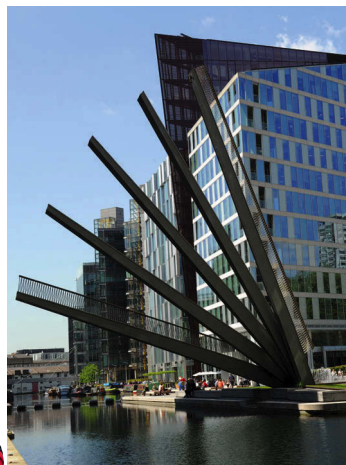
9AM Grab an espresso to go or linger over a masala chai at **8 Caffe**, which also serves a selection of pastries and freshly baked bread. 37 Praed St, W2 1NR. 020 7262 2343. www.8caffe.com.



11AM Ever tried go-karting on ice? You can race with seven other karts around the rink at **Queens** in Bayswater (Tue 7pm-10.20pm). You can also challenge pals to a game of curling, which involves sliding pucks across the ice, or try the human version, where you sit in a "doughnut" and propel yourself across the ice to a bullseye 20m away... 17 Queensway, W2 4QP. 020 7229 0172. www.queens.london.

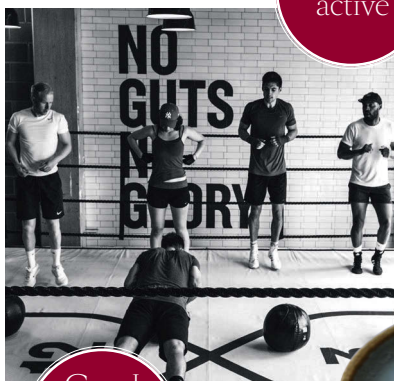


NOON Don't miss the **Fan Bridge**, which opens like a Japanese fan in Paddington Basin (noon Wed & Fri; 2pm Sat). Merchant Square, W2 1JS. 020 7298 0800. www.merchantsquare.co.uk.



2PM Following a refurbishment, **London Street Brasserie** in Hotel Indigo reopened in June 2018 with smart wooden chairs and framed corkscrews. It also has a new menu, so why not warm up over soup, truffle mac and cheese, or fish pie? 16 London St, W2 1HL. 020 7706 6511. www.londonstreetbrasserie.com.

4PM Try a class at **12x3**, a boxing gym with a difference. Expert trainers guide you through a fast and sweaty workout – minus the bruises. 19 Sheldon Square, W2 6PY. www.12x3gym.co.uk.



Get active

7PM **The Victoria** reopened with a new chef in March 2018, following a refurbishment. How does pork and leek sausages, mash and onion gravy sound, followed by sticky toffee pudding? It also does a mean Sunday roast. 10a Strathearn Place, W2 2NH. 020 7724 1191. www.victoriapaddington.co.uk.

Good for a catch-up

8PM If you want some buzz with your beer, head to **Pergola Paddington**, a two-storey food and drink hall. Its rooftop is exposed to the elements, but has heaters – downstairs is sheltered by a clear roof and pergola. 5 Kingdom St, W2 6PY. www.pergolalondon.com.

10PM End your night at **Rubell's Karaoke Lounge**, which is upstairs at **HUCKSTER**, a multi-level space for 400 with DJs, bars and street food stalls. 4 Kingdom St, W2 6BD. 020 7846 1985. www.hucksterlondon.co.uk.





Kupp



DECKSIDE DINING

Swap city life for canal life and stroll the Grand Union, which is lined with restaurants and pubs. But which are cosiest? Which ones have heaters, blankets, real fires and candles? **Sarah Riches** rates their snug factor



A fish dish at The Waterway

A key to cosiness

Candles	Blankets
Heaters	Real fire

Drink and dine on a candlelit deck overlooking the canal at **The Waterway**, which opened in 2002. Parasols, blankets and heaters keep the cold at bay, while inside has real fires and a chandelier made from antlers. Its modern European menu has English lamb shank with French beans and seared tuna with grilled asparagus. 54 Formosa St, W9 2JU. 020 7266 3557. www.thewaterway.co.uk

The Waterway's sister restaurant, **The Summerhouse**, is nearby. Navy and white banquettes line a white brick wall decorated with shells, fishing nets and driftwood. There's even a porthole. If the sun is out, nab a table on the enclosed terrace and watch paddleboarders, kayakers, narrowboats and swans drift along the canal. Later on, the terrace glitters in candlelight and has a canopy, blankets and heaters to keep you cosy. And if you haven't guessed by now, The Summerhouse serves catch of the day,

clam chowder and seafood platters. 60 Blomfield Rd, W9 2PA. 020 7286 6752.

www.thesummerhouse.co

Established in 1820, the dog-friendly pub **Bridge House** is candlelit and has an open fire in an original fireplace. Warm up over pea soup, slow-braised rabbit or nut roast. Upstairs is the 60-seat Canal Café Theatre, where comedian Miranda Hart has performed.

13 Westbourne Terrace Rd, W2 6NG. 020 7266 4326. www.thebridgehouselittlevenice.co.uk. Canal Café Theatre, W2 6NG. 020 7289 6054. www.canalcafetheatre.com

Floor-to-ceiling windows make the most of **The Union's** canalside location. A refurbishment in 2017 brightened its interior with flashes of red, a sign made from lightbulbs and candles. Warm up over Thai curry, a roast or shakshuka – baked eggs and tomato. If the sky is blue, sit on the terrace by the water and sip mulled wine, a hot chocolate or hot gin served in copper cups. 4 Sheldon Square, W2 6EZ. 020 7289 3063. www.theunionbar.co.uk

While there's no space for an open fire aboard The Prince Regent, **London Shell Co** is lit with candles, its windows turn misty on chilly nights and blankets and heaters keep the cold at bay. Opt for a static lunch (Tue–Fri), dinner cruise (Tue–Sat) or lunch cruise (Sat–Sun), during which you'll glide from Sheldon Square to Camden and back. Seafood is sourced each morning, so the menu changes daily and the wine is made by small producers. Tables are compact, so it's a sociable affair – chances are you'll get chatting to your neighbours. That's even more likely during Sea Harvest (to 31 Nov 2018), where you'll be seated at a communal table for 20 for a seafood feast with British cider. Singers and poets will entertain you. Sheldon Square, W2 6PY. 07818 666005. www.londonshellco.com



Need to warm up on the go?

Then grab a hot drink from Caffè Torelli, a motorbike with a hatch attached to it. Floating Pocket Park, W2. www.merchant-square.co.uk



The Summerhouse



Lockhouse

You can't miss **Darcie & May** – the two boats moored permanently outside Paddington Station – as their Pop Art exterior pop with colour amid the grey of winter. Inside is just as warm, thanks to its candles, blankets and heaters. Grab a takeaway cuppa or linger over vegan curry with coconut sambal. *Sheldon Square, W2 6DS. 07746 898627.*

www.daisygreenfood.com. 🔥🔥

Scandi restaurant **Kupp** has floor-to-ceiling windows overlooking the canal by the Fan Bridge. Wrap yourself in blankets to sit on the waterside terrace. Try cured, pickled or smoked dishes such as a pork sausage Swede Dog with pickled cabbage or house-smoked meatballs with lingonberry jam. Want to keep moving? Then grab a takeaway coffee, Canton tea or Kokoa hot chocolate in white, milk or dark. *5 Merchant Square, W2 1AS. 020 7262 8618. www.kupp.co*. 🔥

On the other side of the Fan Bridge, you will find **Lockhouse**, which has outdoor seating overlooking the Floating Pocket Park. Winter sunlight streams through its glass walls, warming its industrial décor. Sink into leather sofas or velvet armchairs to enjoy mulled wine, seasonal cocktails such as Rhubarb Smash or Hot Butter Bird, or hot chocolate with marshmallows. Diners can sit by the water or indoors, which is lit by candles. Tuck into toasties, halloumi fries with beetroot mayo or jerk-spiced fried chicken burgers – then finish with some cheeky churros dipped in hot chocolate sauce. *3 Merchant Square, W2 1AZ. 020 7706 4253. www.lockhouselondon.co.uk*. 🔥

Pizza Express is just next door, and its terrace also provides canal views. Sit inside, which is candlelit, and try its

new arrabbiata prawns in spicy tomato sauce, served in a pan, followed by the new Barbacoa Romana pizza, which is topped with smoky, spicy pulled beef with chipotle salsa. It hosts jazz on Thursday nights. *3 Merchant Square, W2 1BF. 020 7706 8000. www.pizzaexpress.com*. 🔥

Finish your canal-side walk at **The Draft House**, which has views of the Floating Pocket Park. The interior is lit with candles and has snug leather booths to sink into. As the name suggests, it's known for cask beer, stout, ale and cider – try the medium dry, 4.5 per cent Urban Orchard, made with London-pressed apples. Hungry? The Buffalo cauli hot wings and Hot Rodder pizza (pepperoni, 'nduja, red chilli and chilli oil) will put fire in your belly. *Unit 1, West End Quay, W2 1JX. 020 7723 5106. www.drafthouse.co.uk*. 🔥 ▶



This image: GoBoat
Below: Puppet Theatre Barge and a paddleboarder

GO WITH THE FLOW

If you want to do more than just eat, drink and stroll along the canal, then consider canoeing, paddleboarding or watching a puppet show on a floating barge. Come on, water you waiting for?



With its swans, Canadian geese and evergreen Asian plane trees, the Grand Union Canal feels like a patch of countryside in the middle of the city – so it's rather apt that families can now watch *The Town Mouse and the Country Mouse* (to 18 Nov). The 55-seat **Puppet Theatre Barge** in Little Venice has been hosting shows since 1982, and it's returning to Paddington this autumn with the classic tale about cousins who take turns visiting each other. The story is told with rod puppets and is brought alive with music and song. *Blomfield Rd (opposite 35), W9 2PF. 020 7249 6876. www.puppetbarge.com.*

If puppets don't float your boat, then the family-friendly events on the award-winning **Floating Pocket Park** will. The 740sqm platform was designed by Tony Woods – a former Royal Horticultural Society designer of the year – to be a welcoming space all year round. Sit under the canopy and take advantage of its free Wi-Fi and regular events. *W2. www.merchantsquare.co.uk.*

Want to get closer to nature? Then don gloves and scarves and captain a **GoBoat** (every Fri-Mon in Nov & Dec). The electric vessels glide along at 4mph – a fast walking pace – so they're hardly getaway boats, but if you just want to escape the city and relax, they do just nicely. *Merchant Square, W2 1JZ. 07500 940906. www.goboat.co.uk.*

Outdoorsy types can go one step further and on to a paddleboard with **Active360**, a watersports company that operates all year round near the Rolling Bridge. Brave the cold in a group paddleboarding session (£20-£49 for 90 mins) to learn how to balance while standing and paddling. Wetsuits are provided, but if you're worried about falling in, try a canoe (£30 per canoe for two hours). *020 3393 5360. www.active360.co.uk.*

If you want to stay active without the threat of falling in, then challenge your friends to a round of ping pong on the new **table tennis** table near M&S Simply Food by the Rolling Bridge – you can buy a hot drink at the same time. There are also some tables at Paddington Central. *35 North Wharf Rd, W2 1NW. 020 3961 9789.*

Since July 2018, **The Boathouse London** has been permanently moored at the Floating Pocket Park. While you can hire the open-plan space and rooftop as a hotel – and take advantage of the rowing boat and two bikes that come with it – you can also participate in regular events from film screenings and yoga brunches to supper clubs. It costs £625 to host your own event. *Merchant Square, W2 1JZ. 020 8237 9203. www.boathouselondon.co.uk. ■*





Hilton
LONDON PADDINGTON

Your Christmas Party
From 30 to 300 guests

From
£39.00
per person

**-10%
IF YOU
CONFIRM
YOUR EVENT
BEFORE THE
30.11.18**

SCAN ME FOR
THE BROCHURE

+44 (0)207 850 0771
Events.Paddington@Hilton.com



QUALITY FRESH FOOD
DAVID'S DELI
MEZZA & SALAD BAR EST 2004

DAVID'S DELI
QUALITY MEDITERRANEAN CUISINE
GARDEN

BREAKFAST DAILY

CATERING SPECIALISTS

- PLACE YOUR ORDER THROUGH UBEREAT & DELIVEROO
- SPECIAL DISCOUNTED DEALS TO THE NHS, WESTERN RAIL & BLACK CABS

127 PRAED STREET, PADDINGTON W12 1RL M: 07771 704 190

T: 020 7262 2626 E: DAVIDSDELIGARDEN@YAHOO.COM W: DAVIDSCATERING.CO.UK

COOL AS ICE

*Winter Wonderland is returning to Hyde Park, so embrace the cold at an ice sculpting class, catch a fire-on-ice show or skate on the UK's biggest rink, says **Sarah Riches***

WHAT'S NEW

Fans of **Hyde Park Winter Wonderland** (22 Nov–6 Jan)—just a 10-minute walk from Paddington Station—are in for a treat, as the festival returns with new shows, an ice sculpture display with a new theme and a rink even bigger than 2017's—and that's just the tip of the iceberg.

There's also a new family entrance, which means parents and children can enter **Santa Land** more quickly. Once in, kids can visit Father Christmas' workshop, meet elves in Santa's grotto and have fun on Christmas rides like the Santa Express. Little ones can join Tinky-Winky, Dipsy, Laa-Laa and Po from the TV series *Teletubbies* at the new show **Teletubbies Christmas Show**. Every morning for 45 minutes, the **UK's largest circus tent, the MegaDome**, will transform into a festive Tellytubbyland.

Alternatively, children can take part in **The Snowman Experience**, a new immersive show by Backyard Cinema which celebrates the 40th anniversary of Raymond Briggs' festive picture book, *The Snowman*. The audience is invited to explore replica sets from the film, meet the snowman and watch parts of the film on a 10m-wide curved LED screen.

All ages will enjoy **Peter Pan on Ice** on a rink in Santa Land, which stars 18 national, European and world champion skaters from Imperial Ice Stars. As they glide across—and fly above—the ice to original music and songs, JM Barrie's classic tale of the boy who never grows up is brought to life with animated scenery, special effects and fire-on-ice acts.

Adults and over-16s, meanwhile, can watch stand-up comedy every night in the MegaDome at **Winter Wonderland Comedy Club**, a new show

curated by Get Comedy. Headliners include Luisa Omelian, who made her name with her *What Would Beyoncé Do?!* act and who has featured on BBC's *Live at the Apollo*; Glenn Wool, who's known for his political gags and stunts on TV's *8 out of 10 Cats* and Russell Howard's *Good News*; the slapstick double act Raymond & Mr Timpkins; and Terry Alderton, who does a double act with himself...

For something different, head to Santa Land to **Magical Ice Kingdom Presents: The Enchanted Forest**. While Winter Wonderland has featured ice sculptures before, this year's woodland theme is



new, so you can walk past fauns, wolves and mythical creatures such as life-sized unicorns before sitting in a tree throne, all of which are sculpted from 500 tonnes of ice and snow. Make sure you wrap up warm – the kingdom is minus 10 °C.

Want to learn **ice sculpting** from the experts? This year, for the first time, you can join a workshop in a sculpting studio.

If you're more drawn to the festival's **rollercoasters**, then you can invest in a new Coaster Pass. Like TfL's Oyster card, you can tap and ride all you want once you've made a minimum payment of £30. You get back a one-off £5 bonus – it is Christmas, after all. Top up the card online or at box offices around the site.

OLD FAVOURITES

Cirque Berserk is making a comeback with new 2018 acts. Gasp as the troupe of 30 performers shoot bow and arrows with their feet, flip in the air or do the limbo under flames. But what you'll go home remembering is the scent of petrol from

the circus's Globe of Death act. Watch as one, two, three then more motorbikes loop the loop inside a cage at 60mph.

The 45-minute spectacle **Zippo's Christmas Circus** is also returning to the MegaDome. A ringmaster compères acrobatics, aerialists, comedians and last year's Snow Bears – the 12ft-tall inflatable polar bears made their name dancing on 2016's *Britain's Got Talent*.

If you want a break from the shows, then head to the rink by the entrance closest to Hyde Park Corner Tube station. Already the **UK's largest outdoor ice rink**, this year it's even bigger and it sparkles under a canopy of 100,000 fairy lights, with live music in a bandstand in the middle. Little ones can skate with the help of penguin aids.

Get your breath back on the **giant observation wheel**, which is more than 60m high. From the top, you'll have a bird's eye view of the fun beneath you.

Back on land, you can browse the **Bavarian market**, which is made up

of 200 chalets serving stollen, bratwurst and hog roasts, and selling everything from iced biscuits and candles to Christmas decorations and woolly hats.

Want to warm up? Then sip mulled wine, hot chocolate or a pint around an open fire in the **Bavarian Village**. For a bar with a difference, get tickets to **Bar Ice**. Don the cosy hats, coats and gloves provided before entering the minus 10 °C space, where all the chairs, tables, walls and glasses are made from ice. There's no chance of warm beer here...

If you'd rather stay cosy, then head to the karaoke booths at **Bar Hütte**, which is decked out like an Alpine ski lodge. Its booths are designed for groups of up to 20, and food and drinks are served to your table. Once you're merry, you can belt out a festive tune or two. Mariah Carey's *All I Want for Christmas is You*, anyone? **Free entry. 4pm-10pm 22 Nov; 10am-10pm 23 Nov-6 Jan; closed 25 Dec.** Hyde Park, W2. www.hydeparkwinterwonderland.com. ▶





YONKA
PARIS

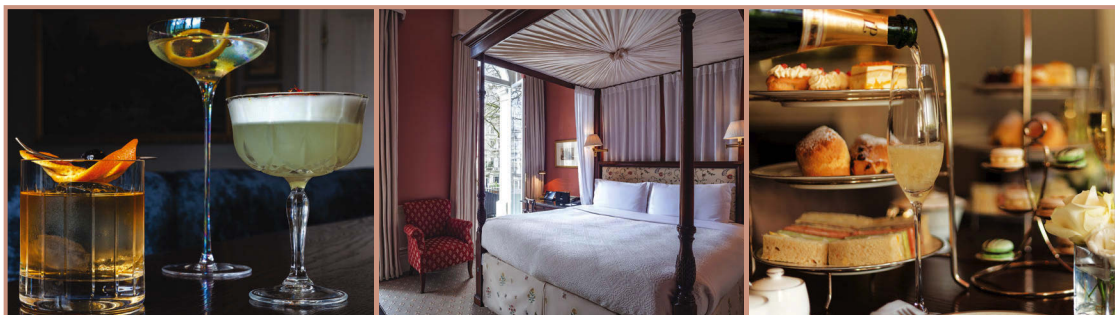
YONKA PARIS SKIN CARE PRODUCTS
AVAILABLE TO BUY IN THE SALON



Treatments Available:

- WAXING
- EYEBROW DESIGN & COLOUR
- SKIN CARE PRODUCTS

WITH APPOINTMENT ONLY: 07767 758 160 OR 0207 706 9841
145 PRAED STREET, W2 1RL, LONDON WWW.ROSEBEAUTYCARE.CO.UK



Afternoon Tea for two

Pure indulgence at Roseate House London - From November 2018 to March 2019, our Afternoon Tea is just £45 for two people, including a glass of bubbly each.

20% off Signature Cocktails

'Breakfast with the Churchills', 'Hermione's Health and Beauty Elixir' and 'Admiral Nelson's Navy'. These are just a few of the newly created, English inspired Cocktails at the Hyde Bar, within Roseate House London.

Between November 2018 and March 2019, all signature cocktails will be discounted by 20%.

Book Direct & Get More

Book your stay at Roseate House London via our website and receive up to 25% off our best available rate, as well as these additional benefits: **complimentary bottle of Prosecco, complimentary In-room Cream Tea, complimentary late check-out until 13:00hrs**

To book, simply call: 020 7479 6600 or email: info.RHL@roseatehotels.com

Roseate House London, 3 Westbourne Terrace, Lancaster Gate,
Hyde Park, London W2 3UL
Tel. 44 (0)20 7479 6600 | Fax. 44 (0)20 7479 6601 roseatehouselondon.com



ROSEATE
HOUSE

Yuletide utopia

If Hyde Park Winter Wonderland gets you in the mood for Christmas, then check out these festive events around W2

WINTER FESTIVAL

Enjoy a Santa's grotto, face painting and free hot chocolate in Connaught Village, while Hyde Park School's choir sings carols. Look out for mince pies and cheese tastings (23 Nov). 3pm-8pm. Free. 9 Porchester Place, W2 2BS. www.connaught-village.co.uk.

GINGERBREAD HOUSE

Get crafty with gingerbread at Tool Shed @ W2 (28 Nov & 6 Dec). Times and prices vary. 39 Connaught St, W2 2AZ. 0800 678 5001. www.sousvidetools.com/w2.

CHRISTMAS LIGHTS

Keep warm with blankets and heaters as you listen to carols and count down to a Christmas tree lights switch-on (6 Dec). Enjoy mulled wine and festive street food 6pm-9pm. Free. *Floating Pocket Park*, W2 1JS. www.merchantsquare.co.uk.

MULLED WINE

Tuck into a hog roast, churros and mulled wine under heated umbrellas at the West Plaza (6, 13 & 20 Dec). 5pm-9pm. *Merchant Square*, W2 1JS. 020 7298 2455. www.merchantsquare.co.uk.

FESTIVE PUPPET SHOW

Over threes will enjoy watching hand-carved marionettes in *Mr Rabbit Meets Brer Santa* at Puppet Theatre Barge (open from 1 Dec). *Blomfield Rd*, W9 2PF. 020 7249 6876. www.puppetbarge.com.

FESTIVE FLOATING BOAT

The Electric Barge is transforming into an Electric Sledge (1-23 Dec). The boat is teaming up with South African caterer Bring & Braai and Caff  Torelli to create a pop-up restaurant serving barbecued meat, mulled wine, winter Pimm's and hot apple cider. 11am-11pm. Two courses  43; three  48. *Merchant Square*, W2 1JS. 020 7298 2455. www.merchantsquare.co.uk.

CAROLS

Enjoy carols by a choir and musicians followed by mulled wine and mince pies (2 Dec) and fizz and panettone (16 Dec). 6pm. Free. *St John's Church*, Hyde Park Crescent, W2 2QD. 020 7262 1732. www.stjohns-hydepark.com.

CHRISTMAS CONCERT

Listen to free carols (6pm; 2 & 16 Dec) or festive tunes, Handel, a soprano and tenor (7.30pm; 14 Dec. Adult  11; child  5). *St James's Church*, W2 3UD. 020 7262 9976. www.stjamespaddington.org.uk.

SANTARUN

Cheer 4,000 people in red suits and fluffy beards as they take part in a 5km or 10km Santa Run (2 Dec) in Victoria Park. The race raises funds for Imperial Health Charity, which helps St Mary's Hospital. 11am. 020 3857 9854. www.imperialcharity.org.uk.

WREATH MAKING

Make wreaths (5 Dec) and decorate gingerbread (11 Dec) at The Cleveland Arms. 28 Chilworth St, W2 6DT. 020 7706 1979. www.theclevelandarms.com. You can also make wreaths in Merchant Square (5 & 12 Dec). Noon-2pm. Free. See left for address. ■



EAT

Comfort food

From tatties and toast to wraps and roasts, Paddington knows how to keep you warm this winter

Share your experience at:

magazine@paddingtonnow.co.uk ✉

#explorepaddington

@inpaddington

InPaddington

InPaddington

FULL STEAM AHEAD

Pergola Paddington's rooftop bar and covered pergola has seats for 850. But if all those bodies don't keep you warm, then its heaters and mulled wine will keep things steamy – as will MAM's steaming tofu and mushroom dumplings. This winter, the venue's street food vendors also include Smokey Robinson burgers from Patty & Bun, spicy Mexican fried tortillas and tacos from Yucatán, and duck-fat chips from Canard. Find them under the pergola. 5 Kingdom St, W2 6PY. www.pergolalondon.com.

CASUAL BITES



WRAP UP FOR WRAPS

World Food Market in Paddington Basin may be outdoors, but you need fresh air sometimes. So wrap up and order some delicious comfort food from the varied street food traders every week. Regulars include Pasta is Ready, Perú Finest and The Regal Duck. 11am-3pm; Tue & Thu to 20 Dec 2018 & from 5 Feb 2019. Merchant Square, W2 1JS. 020 7298 2455. www.merchantsquare.co.uk/eat-drink.



TATTIES AND TOAST

If you long for the days when comfort food meant jacket potatoes instead of sweet potato fries, or baked beans on toast instead of avocado, then you're in the right place at **Sandro**. This cheap lunchtime spot is mainly a takeaway sandwich bar, but it has seats inside and outside beneath a green canopy. It also serves porridge, paninis and lasagne. 22 Spring St, W2 1JA. 020 7723 9847.



PADDINGTON PÂTISSERIE

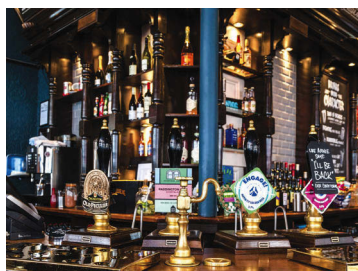
What's more comforting than cake? **Mille Pâtisserie** has served gâteaux made of fine layers of cream-filled crêpes since September 2018. While it's a French delicacy, chef Yulei Yang is Chinese so expect global flavours such as Kyoto matcha, Arabica coffee, Sicilian lemons and Valrhona chocolate. They're made on-site. 8a Spring St, W2 3RA. 020 7018 7667. www.patisserieimille.com.

HEARTY MAINS

SPICE IT UP

How does pork belly with roast apples and sage sound? That's just one roast cooked up by the head chef at **The Cleveland Arms** off Westbourne Terrace. Louis Lingwood changes the Sunday menu monthly. Pop in and you may chance upon Stichelton blue cheese, Innes Log and spiced plums, or pumpkin and chilli soup. 28 Chilworth St, W2 6DT. 020 7706 1979.

www.theclevelandarms.com.



ALL THE TRIMMINGS

Built in 1823, **Fountains Abbey** opposite St Mary's Hospital is a typical British pub, with original tiles, Chesterfield sofas and even carpet. Order a cask ale, maple and root vegetable soup and a Christmas dinner pie from its festive fayre menu (13 Nov-1 Jan). The pub also serves brunch on Boxing Day and New Year's Day. 109 Praed St, W2 1RL. 020 7723 2364. www.greeneking-pubs.co.uk.



KING OF THE BURGERS

Lockhouse in Paddington Basin serves the best comfort food – everything from a full English and sourdough toasties to a Locked & Loaded, a burger with double beef, cheese and Wiltshire bacon and optional jalapeños. Still have space? Order churros with chocolate sauce, or banana fritters with rum ice cream. 3 Merchant Square, W2 1AZ. 020 7706 4253. www.lockhouselondon.co.uk.



DINE WITH FRIENDS

Unite friends and family at **The Union**, a canalside restaurant with an interior made cosy by golden lights and brown leather banquettes. Tuck into a warming plate of jerk-spiced pork sausages with garlic, chive and coriander mash, gravy and crispy shallots. It also serves killer eggs Benedict for weekend brunches. Sheldon Square, W2 6EZ. 020 7289 3063. www.theunionbar.co.uk.



TURN UP THE HEAT

When it's so cold you can't feel your toes/nose anymore, then head indoors to **The Mughal's** near Norfolk Square for a curry. An illuminated 5ft-tall teapot casts a warm glow over the restaurant, which specialises in north Indian dishes. It serves all your favourites, from butter chicken and biryani to tandoori prawns and vegetarian thali. 11 London St, W2 1HL. 020 7262 3030.



SWALLOW YOUR PRIDE

Since the 1920s, **Pride of Paddington** opposite Paddington Station has served pub classics in a traditional setting: think blackboards, flags and tables made from barrels. Opt for scampi and chips, chilli con carne or a Sunday roast, with duck-fat roast potatoes, a Yorkshire pudding and, in their words, serious gravy. 1-3 Craven Rd, W2 3BP. 020 7402 2156. www.theprideofpaddington.co.uk.



FRESH FROM THE GRILL

Now winter's here, it's the perfect weather to enjoy a slab of meat with no regrets, and as the name suggests, **Smith's Bar & Grill** specialises in grilled dishes. How does grilled pork belly sound? Alternatively, fill up on lamb chops with rosemary roast potatoes drizzled with red wine jus as you watch narrowboats pass by. 25 Sheldon Square, W2 6EY. 020 7286 9458. www.smithsbarandgrill.co.uk.

DRINK



HUCKSTER

A touch of spice

Why not swap ice for spice this winter, and warm up over a spicy cocktail, mulled wine or a hot toddy, says Sarah Riches



PARTYTIME

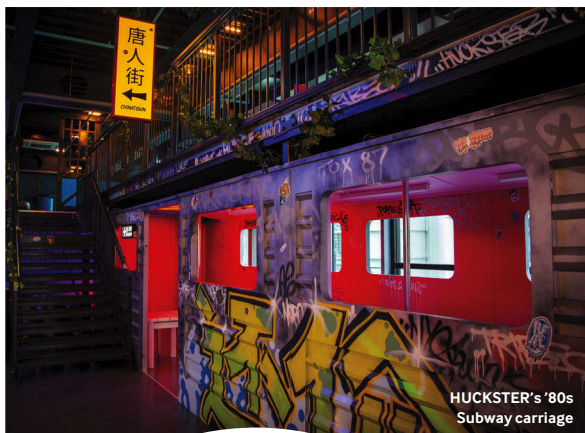
With space for 400, **HUCKSTER** is made for Christmas parties and New Year's Eve. If you want a private do, book Chinatown, which has its own fridge. Feeling social? Then invite friends of friends to join you at High Line instead, a 1980s New York Subway carriage with dancing poles which is suitable for private hire. It's on the first level, which overlooks the main bar. Karaoke fans meanwhile can sing in 2019 at Rubell's, a karaoke lounge inspired by Steve Rubell—the founder of New York's legendary club Studio 54. If you'd rather mingle, ask a bartender to spin the wheel of fortune by the main bar, drink the results and get dancing to the DJ. 4 Kingdom St, W2 6BD. 020 7846 1985. www.hucksterlondon.co.uk.

CLASSY COCKTAILS

Why not warm up with a tipple at **146 Paddington**—a new destination bar inspired by the locomotive history of Paddington Station across the road. Expert mixologists create signature cocktails including The Poison Ivy, with Aperol, Maraschino, lemon and egg white. Hilton London Paddington, 146 Praed St, W2 1EE. 020 7850 0500. www.146paddington.com.

RED, RED WINE

While primarily a restaurant serving modern British cuisine, the **Frontline Club** also has a bar with a respectable wine list, and what's more warming than a glass of red? You can also take your pick from an impressive selection of global whiskies. Rather less refined—but much more fun—is a flaming Sambuca... 13 Norfolk Place, W2 1QJ. 020 7479 8950. www.frontlineclub.com.



HUCKSTER's '80s Subway carriage



Frontline Club



Prince of Wales



The Hyde Bar

CINNAMON AND SPICE

Roseate House London's **The Hyde Bar** by Sussex Gardens has gained a reputation for rare whiskies and spirits. It also serves 15 seasonal cocktails. Autumn favourites include George Byron's Secret Poem – Ocho blanco tequila, Cynar (artichoke) liqueur, Cabernet Sauvignon, thyme and blackcurrant jam – and Admiral Nelson's Navy, made with Bee Gee's rum, tawny port, amaro Siciliano and pomegranate. It might be cold outside but a shot of tequila will warm you up. So why not try Don Julio 1942 from Mexico? Aged for 30 months in oak, it has notes of cinnamon. You can also try mezcal, the Mexican agave-based spirit. Meteoro Jovens, from Oaxaca, is an unaged smoky mezcal that's perfect for sipping by the hotel's open fire. More of a brandy lover? Opt for Capreolus barrel-aged apple eau de vie

2015, fermented and double distilled using Harry Masters Jersey apples from Gloucestershire. The result? Notes of apple and cinnamon – just what you need as the autumn leaves fall. *Roseate House, 3 Westbourne Terrace, W2 3UL. 020 7479 6600. www.roseatehouselondon.com.*

WHISKEY LULLABY

The **Prince of Wales** next to Paddington Station had a much-needed renovation in 2017, and now it's worth seeking out even if you're not waiting for a train. Its winter menu runs the gamut from mulled wine and mulled cider to Irish coffee made with Jameson Irish whiskey; hot toddies made with whiskey and lemon and hot chocolate flavoured with Tia Maria, Kahlúa or Baileys (or all three?). Grab a seat under the chandelier by the train platform clock and watch the world go by. *2 Cleveland Terrace, W2 6LH. 020 7706 7040. www.princeofwalespaddington.co.uk.*

A PLUM JOB

The **Pilgrim** hotel's first-floor lounge is a well-kept secret, despite being just steps away from Paddington Station. It is decked in autumn colours – think warm wooden floorboards and olive green velvet armchairs you can sink into. While it serves red wine and other winter options, its cocktail list deserves a special mention as it is made up of drinks designed by world-renowned mixologists such as Tony Conigliaro from Islington's 69 Colebrooke Row and Chad Solomon from Texas's Midnight Rambler. But when the nights are dark and the rain is heavy, there's really only one choice: the Santo Domingo, designed by Dee Ann Quinones from Ohio. It blends tequila plum vinegar, pepper sauce and fizzy orange. Pair it with stellar bar snacks such as fries with aioli. *25 London St, W2 1HH. www.thepilgrim.com.* ►

PLANNING YOUR NEXT MEETING JUST GOT

Simpler

Hilton London Metropole provide a package that makes the booking process **simple**, **quick** and **easy** for your next meeting. With a great variety of meeting space, our flexible meetings package is perfect for up to **50 people**.

We know how important it is for everyone to stay refreshed and refuelled throughout the day, so we offer an **all-inclusive food offering** giving everyone access to free-flowing food and drink during your meeting at **NO extra cost**.

1



REQUEST MEETING

2



RECEIVE ONLINE
EXPRESS OFFER

3



CONFIRM WITH
ONE CLICK

4



ARRIVE
AND ENJOY

- Online express offer
- Pre-payment 24 hours to arrival
- No complex contracts
- Free Wi-Fi
- Free to cancel 24 hours prior to arrival
- All-inclusive free-flowing food & drink

Enjoy rates from £69+VAT per person!

Book today with our dedicated team at Hilton London Metropole

For more information or to book your next meeting, please contact our team on:

T: +44(0)20 7402 2400

E: cbs.londonmet@hilton.com


Hilton
LONDON METROPOLE



HOT SHOT

If you're lucky, grab the leather sofa by the window of **Lockhouse** and you'll have a perfect view of Paddington Basin. Watch people hurry past in the cold as you order mulled wine from a steaming urn on the bar; it's spiced with cinnamon, cardamom, star anise, oranges, apples and a few secret ingredients. You could also sip a glass of Vega Piedra Rioja, a spicy red wine with a warming cherry finish, or treat yourself to a hot chocolate or coffee, which can be made boozy on request. You could spike them with whisky or El Dorado eight-year-old rum, perhaps... Better still, opt for a hot buttered rum made with a blend of dark rum, nutmeg, orange zest, cinnamon and orange spiced butter, or a hot apple toddy – a warming mug of apple cider made with a mix of Scotch whisky, honey and cinnamon. *3 Merchant Square, W2 1AZ. 020 7706 4253.*
www.lockhouselondon.co.uk

WINE AND DINE

If it's wine you're after, then you're in the right place at **Cork & Bottle**, a wine bar one minute's walk from Paddington Station. Its drinks menu changes twice a year and includes 40 options by the glass and 300 by the bottle. This winter, you can warm up over mulled wine, or try a Purgatori 2014 from Costers del Segre in Spain – a perfect blend of Grenache, Syrah and Carignan grapes, strawberries, white pepper and a hint of oak. Alternatively, order a bottle of Mercurey Rouge, a 2014 Pinot Noir from Michel Juillot in Burgundy. Its robust, cherry flavours have a lingering finish. If you're not sure what to go for, then opt for a glass of special wine – which is selected by the bar's longest-serving members of staff. If you get peckish, you can order cheese, charcuterie, olives or small plates while you're there. The venue also hosts regular events. *27 Spring St, W2 1JA. 020 7262 1485.*
www.thecorkandbottle.co.uk

THE BIG APPLE

Heist Bank is well known for its wood oven-baked sourdough pizzas and local craft lager and beer, which includes two rotating guest taps that can be taken away in 3½ pint growlers if you're so inclined. You can also order a £5 mulled cider made with orange, cinnamon and cloves to get you in the festive spirit. Knock a few of those back and you'll have enough Dutch courage to take on pals in the private karaoke room downstairs. You can also play pool or table football. *5 North Wharf Rd, W2 1LA. 020 7723 8080. www.heistbank.com.*

FEEL THE HEAT

Order a rhubarb bellini at **Pergola Paddington** and huddle by heaters on the roof or head downstairs to a covered bar, which has communal tables sheltered beneath a pergola. During winter, you can keep cosy with a mug of mulled wine. *5 Kingdom St, W2 6PY. www.pergolalondon.com.*



GIVE



Silver Sunday swimmers

A HELPING HAND

If putting up Christmas decorations or playing with iPads sounds like your idea of fun, then you can enjoy yourself and volunteer at the same time. **Paddington Partnership's volunteer scheme** pairs local employees with volunteering opportunities based on their interests and the needs of local organisations.

In September 2018, outdoorsy types at Vodafone painted gates and cleared leaves at Paddington Recreation Ground, creative employees from Visa transformed the Oxfam store on Edgware Road, and reading and maths volunteers returned to the classroom to support primary school pupils.

With Christmas just around the corner, put your skills to good use by teaching the elderly in care homes how to use the gadgets they may get as gifts. Or, if you work in retail, why not wrap up presents or decorate a Christmas tree at a local hospice? You'll definitely put a smile on someone's face. To find out more, visit www.thisispaddington.com.

I KEEP GOING TO THE RIVER TO PRAY...

... Well, soon singer Ella Henderson will be able to pray by the canal instead – as **St Mary Magdalene's Church Paddington**, north of Little Venice, is reopening in spring 2019 following a £3million renovation.

Built between 1865 and 1878, the Grade I-listed church has been under restoration since July 2017, while its painted ceiling, stained glass and sculptures are cleaned and its stone steps are replaced. The original north porch entrance, which has been bricked up for 60 years, will also reopen. The jewel of the crown will be a new building with a café that opens on to the canal. This will have a lift and space for a programme of

events including concerts, exhibitions, rehearsals and theatre from Easter 2019. It's set to become a community hub for local people and visitors to the area. Father Henry Everett says: 'Thanks to the Heritage Lottery Fund, Westminster City Council and the Paddington Development Trust, the church will

become an arts and heritage hub, and the building will be back at the heart of the community.'

Rowington Close, W2 5TF. 020 7289 1818.

www.st-mary-magdalene.co.uk.

LEADER OF THE PACK

Who knows what a trustee is? They're the people who are in charge of a charity – the ones who make it tick. Without them, charities would struggle to function, and yet the role can often seem thankless. That's why



St Mary Magdalene's Church Paddington

A sense of community appeals to everyone, but how is it created? Interacting with locals and lending a hand to those in need is a good place to start

Trustees Week (12-18 Nov 2018), which highlights the work that trustees do, is so important.

If you'd like to become a trustee of Friends of St Mary's – the charity that fundraises for St Mary's Hospital – now's your chance, as it's on the lookout for a new Chair. The trust needs someone with management experience who can spare the time to attend monthly meetings, represent the charity and be responsible for its finances and strategy. Former chair Huessein Syed says: 'I became the chair of Friends of St Mary's in June 2011, because I believe we all have a responsibility to give something back to society and I wanted to make a difference. It is a three-year commitment, and when I moved to York I continued coming to the monthly meetings until I stepped down in June 2014. During my time as chair, I led the meetings, liaised between the hospital and Friends of St Mary's and created relationships with churches, shops and businesses to try to encourage them to donate cash, prizes or even a marquee for charity events.' 020 3145 1207. www.thisispaddington.com.

THE LION KING

In 2017, Westminster City Council launched Westminster Lions (see below), a great new awards scheme



that encourages organisations to contribute positively to the local community. The awards go to organisations that create local corporate responsibility initiatives, such as sharing your skills and helping school pupils with their reading. And guess what? In July 2018, Paddington Partnership won – so let's hear it roar! 020 3145 1207. www.thisispaddington.com.

CALL TO ACTION

Do you have cupboards full of old coats, jumpers, belts and trainers? Then donate them to help the homeless. Look out for a collection point in Merchant Square (12-18 Nov). All donations go to the charity West London Mission, which helps people

affected by poverty, homelessness and trauma. 5 Merchant Square, W2 1JS. www.merchantsquare.co.uk.

PRESENT DONATION

Christmas is a time of giving, so consider donating new toys for babies, tots and teens to **COSMIC** (Children of St Mary's Intensive Care). The charity will wrap up the presents before distributing them to the children. A collection point will be next to the Christmas tree (1-16 Dec). 5 Merchant Square, W2 1JS. 020 7298 2455. www.merchantsquare.co.uk.

THAT'S WHAT FRIENDS ARE FOR

Silver Sunday began as a tea dance in 2012 and has since morphed into a national campaign to reduce loneliness in the elderly. Each October, events are held around the country to provide companionship for older people. The 2018 initiative saw The Paddington Partnership host canal trips for 72 older people, while 25 senior citizens wrapped up in blankets for trips around Hyde Park in electric buggies courtesy of Liberty Drive. www.silversunday.org.uk.



LIVE

Home sweet home

What could be more tempting than a one-minute school run or a 45-second commute? With a new school and new apartments transforming North Wharf Road, this is the reality for some

Stay in the loop

magazine@paddingtonnow.co.uk ✉

#explorepaddington

@inpaddington

InPaddington

InPaddington

THAT'S MY BOY!

Just moved to the Paddington area? So has **Marylebone Boys' School**, which relocated to Paddington Basin in September 2018. Its motto, 'studio et industria', translates as 'through application and hard work' – and that obviously goes for the teachers and students as Ofsted rated it good in 2017.

As well as National Curriculum subjects, the mixed-faith school teaches Latin, critical thinking and political literacy to encourage logical thinking and the clear expression of ideas. It also hosts extra chess and coding classes, and occasional 'drop down days', when the timetable is swapped for a PSHCE

(Personal, Social, Health and Careers Education) day.

A house system means all students belong to one of four houses, which compete for a house cup, and older boys mentor younger ones.

Got teens? Then attend its sixth-form opening evening (15 Nov 2018).
North Wharf Rd, W2 1QZ. 020 3143 7100.
www.maryleboneschool.org

LIVING THE DREAM

Whether your heart belongs to the city or country, who wouldn't want to live by the water?

When **No 3 Canalside Walk** opens on the Grand Union Canal in summer 2020,

it will combine the convenience of city life with the tranquillity of the country. Many of the 12-storey building's 84 apartments will overlook the canal opposite Paddington Station.

All residents will benefit from a concierge, underground car park and rooftop lounge, which features fire pits, Wi-Fi, an outdoor gym and city views. Those of you who work at the new Brunel Building meanwhile – which is next door – will have a 45-second commute, and if your kids are enrolled in Marylebone Boys' School, just behind, you'll really have no excuse for being late to work...
No.3 Canalside Walk, W2. 020 7087 5111.
www.canalsidewalk.com

Marylebone Boys' School ©Oliver Goodrich; No.3 Canalside Walk courtesy of No.3 Canalside Walk; Paddington Gardens courtesy of Paddington Gardens



The terrace at No 3 Canalside Walk



Paddington Gardens

THE SECRET GARDEN

The secret's out – W2's latest residence, **Paddington Gardens**, opens its doors to its first residents in December 2018.

The 3.8 acre space behind the Rolling Bridge is made up of four connected towers which vary in height from 17 to 21 storeys. It also has nearly an acre of gardens with plane and birch trees, a stream, wildflowers and a kids' play area.

Designed by Assael Architecture and Powell Dobson Architects, the building's double-height reception resembles a five-star hotel lobby – as do the one, two, three and four-bedroom apartments, which come with underfloor heating, floor-to-ceiling windows and a terrace, glass balcony or garden.

A 24-hour concierge, underground car park and priority access to the Virgin Active gym next door are other treats.

A pedestrianised boulevard will link the development to a future hotel. **North Wharf Rd, W2. 020 3510 2202.**

www.paddingtongardens.com.



Hidden mews in W2

WHY PADDINGTON?

Walking distance to Hyde Park, Little Venice and family-run cafés make Paddington a desirable area, say these residents

Geraldine Wong Smith works for the advertising agency Chilworth Communications.

She says: 'I bought my first flat in 1982 above Bizzarro, the Italian restaurant on Craven Road. I could never go to bed before 3am as the owner would drag me down to join his dinner party!

'Since then my husband and I have lived in various places in Paddington and we have seen the area change for the better. It has a fabulous mix of the old punctuated by stunning new skyscrapers in Paddington Basin, yet it still retains its character.

'We now live in Star Street, which is what living in central London is all about. If you walk outside past midnight, you have no problem getting a coffee or a meal!



'I like to do yoga in Norfolk Square, then meet friends for coffee and a sandwich at Kioskafé in Norfolk Place, which sells 2,500 newspapers. Then I might go to Distinctive Shoe Repairs on Norfolk Place to see Grant the amazing cobbler

who stitches up my favourite shoes, or to Lauder & Rees, a boutique optician on Praed Street that stocks an amazing array of frames, which I can't resist adding to my collection.

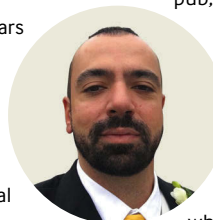
'I have so many favourite lunch spots, including the Frontline Club in London Street, the Chinese restaurant Pearl Liang in Sheldon Square, and Melur near Sussex Gardens, which serves Malaysian food.

'I like Cork & Bottle, as it has excellent food and wine. The Draft House is a good spot – watching ducks paddle around the Floating Pocket Park is a delight.'

Paul Charalambous owns Stylotel and The Sussex Arms and has lived in Paddington since 1978.

He says: 'My father set up his business in Paddington 40 years ago, so I've lived here all my life. I stuck around because it's so easy to walk to central London and it has great amenities. I enjoy walking in Hyde Park and along the canal to Little Venice.

'If I have breakfast out, I get it from Mimos Café, as it serves good quality food and it's convenient, reasonable and friendly. At lunch I might go to the



Frontline Club, which is great for taking clients to. For an after-work drink or if my staff have a leaving do, we go to my pub, The Sussex Arms, of course!

'Paddington has really transformed, especially over the past 10 to 15 years or so. It's now a thriving area for tourists and for local businesses to engage with each other, which I believe is due to the hard work of Paddington BID (Business Improvement District) and because of the extensive investment of local businesses.'



WORK

Stay in the loop

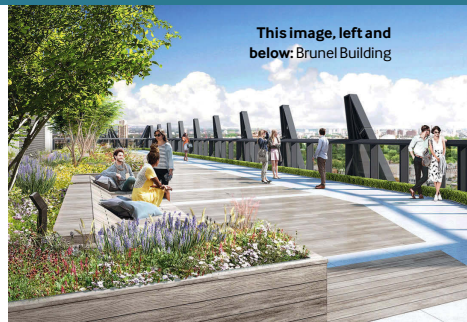
magazine@paddingtonnow.co.uk ✉

#explorepaddington

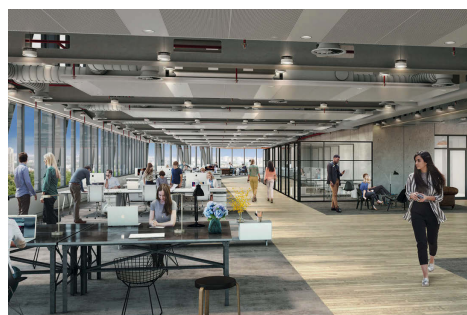
@inpaddington 🐦

InPaddington 📷

InPaddington 📘



This image, left and below: Brunel Building



Working nine to five

From a new creative work space and secret lunchtime spots, to finding out how to make your office greener, keep up to date with Paddington's changing work scene

TAKING CARE OF BUSINESS

Move over, Google – there's another swish office in town. The **Brunel Building**, which is bordered by North Wharf Road, Bishop's Bridge Road and the Grand Union Canal, is set to open in March 2019.

The building is inspired by Isambard Kingdom Brunel – the engineer behind Paddington Station – so the architect firm Fletcher Priest has designed an asymmetrical steel skeleton exterior and white tube tiles in the bathrooms.

The 17-storey building will have offices on 15 storeys – and Sony Pictures Entertainment and Hellman & Friedman are set to move in. And whoever is on the 14th level will have access to a private roof terrace. There's also a communal

roof terrace with trees and benches on the 16th floor which will overlook Hyde Park. The reception and a shop or restaurant meanwhile will open on to a new public canalside path.

2 Canalside Walk, W2 1DG. 020 7659 3000. www.brunelbuilding.com.

DOWN TO BUSINESS

Calling all creatives! A workspace for 200 media types launched in October 2018 behind the Rolling Bridge.

Paddington Works is aimed at creative start-ups and larger businesses. It covers the ground and first floors of a mixed-use building and has four studios with editing equipment, five meeting rooms for four people, a boardroom for 35 and an

auditorium for 70. It has seven informal meeting areas with free Wi-Fi. Offices have ergonomic chairs, standing desks and lighting that brightens after lunch to avoid the dreaded 3pm slump. Employees and the public will also soon benefit from a café and a high-intensity interval training (HIIT) gym.

The centre is funded in part by Westminster City Council. David Harvey, the cabinet member for Economic Development, Education and Community, says: 'By investing in high-quality facilities and support for creative entrepreneurs and small businesses, we're future-proofing our economy and strengthening the social and cultural bonds that make Westminster great.'

The site's general manager, Sam Margolis, adds: 'The council is keen for us to host events for the public, there will be one on 16 November for 16 to 25-year-olds to learn for free how to set up their own business.' 8 Hermitage St, W2 1BE. 020 7221 0200.

www.paddingtonworks.com.

WHY PADDINGTON?

Easy links with Heathrow Express, a canal to stroll at lunchtime and new cafés for morning espressos make Paddington a popular spot, it seems...

BLOOMING LOVELY

The canal may be just minutes away from your office, but you can still make your business greener with window boxes and potted plants. **Paddington BID won gold in London in Bloom 2017 and 2018. In 2018 it also got through to the finals of Britain in Bloom, a national competition judged by Royal Horticultural Society – so cross your green fingers W2 wins!**

A SQUARE DEAL

The redevelopment of the former Royal Mail Sorting Office, a 1.35 acre block behind Hotel Mercure London, is underway after demolition of the current site began in summer 2018.

Construction on **Paddington Square** (formerly Paddington Cube and Paddington Quarter) will begin in 2019.

Designed by The Shard's architect Renzo Piano, the 19-storey building will connect to Paddington Station via a new station entrance and public space on Praed Street. It will also transform the northern section of London Street into a pedestrianised boulevard. The development will have shops and restaurants over four floors underground, offices and a rooftop restaurant with a leafy outdoor deck with views of Hyde Park. It is due to be completed late 2022. www.paddingtonsquare.co.uk.

Masato Jones founded the fashion firm Masato London.

He says: 'I moved to Paddington because of its great Tube and bus access. It also has lots of independent shops, hotels and cafés which create a friendly community. It feels like a small town, but at the same time the Heathrow Express makes it feel international.'



'At lunch I go to Mimo's Café on London Street, which is run by an Italian family. It's popular with locals and tourists. I also like Hyde Park and the stables on Bathurst Mews near Sussex Gardens. If I'm hosting a meeting off-site, I'll go to Caffè Nero on Spring Street as it's quiet; for drinks, I like The Pilgrim, a hotel on London Street. I always feel welcome there.'

Richard Ardron is the headteacher of Marylebone Boys' School, which moved to Paddington Basin in September 2018.

He says: 'The Department for Education chose our W2 location at the heart of Westminster. Now the school is in the middle of national and international businesses with whom we would like to forge links to bring in speakers, organise work placements and create mentoring relationships. Our aim is to be part of



the Paddington Basin community. 'When we opened in 2014, we were temporarily based in Brent, in premises shared with a primary school.

We are relieved to now have a permanent nine-storey site on North Wharf Road. 'We have a sports hall, a rooftop games area and a Sixth Form from September 2019 – attend our Sixth Form open evening (15 Nov 2018). 'I'm enjoying having access to so many coffee vendors, which is a staple for anyone in the teaching world!'

Natasha Adams is JCDecaux UK's HR director, which creates street furniture such as bus shelters with or without advertising.

She says: 'JCDecaux is based in Sale Place, 30 seconds' walk from Paddington Basin. I love the variety of Paddington, from free music in Norfolk Square to street food stalls and Paddington Pergola, which is a favourite destination for my colleagues and I after work. 'At lunch, I sit on the Floating Pocket Park, or stroll beside the canal to Kupp or Massis. I like walking past canalboats, circling Sheldon Square then returning to work through Paddington Station to keep an eye out for JCDecaux adverts! I grew up by the sea and love being near water so the ducks and paddleboarders are a real antidote to a busy day.'

'Our team often celebrate birthdays at Pizza Express as we can use the Taste discount card there. With over 200 staff in Paddington, we're regulars in most of the canalside restaurants. For Christmas parties and leaving events, we're keen on Heist Bank.'



SLEEP

Pillow talk

So you made your flight and the Heathrow Express is pulling into Paddington. Had no time to book a hotel? Then give these a chance...

Have you visited these hotels?
Share your experience at:

magazine@paddingtonnow.co.uk ✉

#explorepaddington

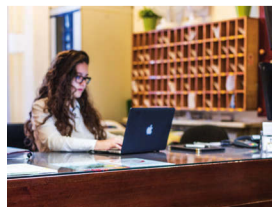
@inpaddington

InPaddington

InPaddington



Free events in Norfolk Square

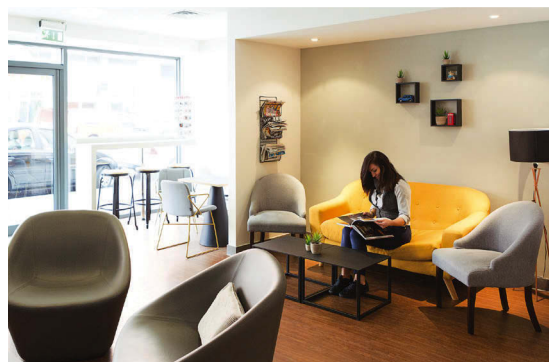


Best Luxury Hotel

Not many hotels can claim to have vitamin C-infused showers and coffee pods, but **The Chilworth** next to Paddington Station can. It's details like these – along with a pillow menu and rose petals on your bed – that make this townhouse memorable. Formerly The Shaftesbury Premier London Paddington, it reopened following a recent refurbishment. Its 124 rooms now feature dark wood, crushed velvet and polished marbled bathrooms. Even the single rooms, which have fresh flowers, feel luxurious. Facilities include a meeting room, bar, library and 24-hour gym. You can also relax in the lobby lounge or spa, which has a Jacuzzi, steam room and treatments. The restaurant serves tofu scrambled egg on toast; chai pudding or savoury semolina porridge – a South Indian speciality. A traditional, chocolate or Indian-themed afternoon tea is available. The hotel offers guided walks, free bikes and suggests running routes. Not a runner? Then do yoga in your room or in the Yoga Lounge (8am & 9am, Mon & Wed). 55 Westbourne Terrace, W2 3UY. 020 7723 3434. www.thechilworth.co.uk.

Best Family Hotel

Originally built in the 1850s for a wealthy family, **Shakespeare Hotel** has been a hotel for the past 20 years. Part of a terrace overlooking Norfolk Square, it boasts a smart cream exterior. Its interior meanwhile has tall ceilings and big windows, and original features including restored cornices and fireplaces with marble mantelpieces and patterned tiles. However, note that its listed status means there is no lift, and the steep stairs can be a challenge with large suitcases. This hotel is ideal for families as, unusually, it has triple, quadruple and five-bedded rooms. Baby cots are also available, with advance notice. Bedrooms come with comfy mattresses and flatscreen TVs, and breakfast is included. Ideal for families, it has a games room with a pool table, table football, computers and a vending machine. There is also a table tennis table in the square, and occasional yoga when the sun is out – but if it's snowy, why not have a snowball fight with your kids? 22-28 Norfolk Square, W2 1RS. 020 7723 7233. www.shakespearehotel.co.uk.



Best Mid-range Hotel

In July 2018, 30 Sussex Hotel rebranded as **OYO Townhouse**, and now it stands out from the other hotels on the Sussex Gardens strip. The four-storey Victorian townhouse has 13 rooms, all of which are spotless. There's no lift, but the 24-hour staff can assist you with your suitcase. The décor is plain but stylish, with a few nice touches. There are flowers on the railings, a golden velvet sofa and fruit bowl in reception, and thick carpets, purple cushions and illuminated images of London landmarks such as Tower Bridge, Shakespeare's Globe theatre and the Royal Albert Hall in the bedrooms, making them feel like a friend's guest room. All of the rooms come with a hairdryer, kettle and air-con, and have free Wi-Fi and smart TVs. The main difference between the standard of rooms is the size – some have king-size beds, but even the cheapest, the standard double, has queen-size beds. Breakfast is included, and when you check out, you can leave your luggage if need be. 30 Sussex Gardens, W2 1UL. 020 3972 4000. www.oyotownhousesussex.com.

Best Budget Hotel

If all you need is cheap, clean and safe, then **Point.a Hotels** (formerly Tune Hotels) is for you. Its motto sums it up nicely: 'Everything you need and nothing you don't.' Its clutter-free ethos means there's no kettle, iron or bath, and some rooms don't have windows – but you can choose one when booking. Most rooms are 8sqm-12sqm, but there's storage under the bed, handbag hooks, dropdown tables for laptops and space to hang clothes. Big mirrors make the most of the space, and there's even multi-coloured mood lighting (a necessity, right?). Rooms have Hypnos beds, walk-in power showers and basic toiletries, a hairdryer, safe and air-con. They also come with free Wi-Fi and 40in smart TVs. Unlike some hotels, this one has a 24-hour reception. Pay by card (not cash) on arrival or sign up to its 'A List' online in advance for 10 per cent off. The A List club also gives you access to local deals such as 20 per cent off The Victoria (daily noon-6pm). Once you have checked out, it costs £3 per bag to leave luggage. 41 Praed St, W2 1NR. 020 7258 3140. www.pointahotels.com.

Bath Abbey



Great days out

Whether you want to see fireworks, learn about witchcraft or shop at a Christmas market, you can have a great day out beyond Paddington with Great Western Railway

Did you know that in the time it would take you to walk to Oxford Circus from Paddington Station, you could be in Windsor? Or that walking to Big Ben takes the same time as the train journey to Winston Churchill's house? With that in mind, hop aboard a Great Western Railway (GWR) train at Paddington Station for a taste of Britain outside the capital.

BATH

Begin your trip by learning about the city's past at the Roman Baths and admiring Georgian architecture along the Royal Crescent. Once you've seen Bath Abbey, take in the *Royal Women* exhibition at the Fashion Museum (to 28 Apr 2019). If you want to stop for a snack, then try a traditional bun with lemon curd at Sally Lunn's. On a fine day, kick through the autumn leaves in Royal Victoria Park or relax in the steamy rooftop pool at Thermae Bath Spa. **Get there:** *Paddington to Bath Spa takes about 1 hr 30 mins.*

WINDSOR

Windsor Castle has been the home of British royalty for 1,000 years and was the location of Prince Harry and Meghan Markle's wedding. When the Queen is in residence, a flag is flown from the Round Tower. While the castle gets all the glory, we also suggest taking a boat trip with French Brothers to see the racecourse and Eton College – where Karl Marx and George Orwell studied.

Get there: *Paddington to Windsor & Eton Central (via Slough) takes about 35 mins.*

OXFORD

Known around the world for the University of Oxford, this city is also home to Oxford Botanic Garden, a Christmas market (7-22 Dec 2018) and art and archaeology collections at Ashmolean Museum – don't miss *Spellbound*, an exhibition about magic, ritual and witchcraft (to 6 Jan 2019). You can also take a guided tour of Oxford Castle.

Get there: *Paddington to Oxford takes about 1 hr.*

Windsor



Oxford



BLenheim PALACE

The birthplace of Sir Winston Churchill – Britain's prime minister during World War II – Blenheim Palace is home to one of Europe's most impressive collection of paintings. A GWR Blenheim Palace ticket includes return train travel to Oxford Station, a 500 or S3 bus to Blenheim Palace and reduced entry to the palace and grounds.

Get there: *Paddington to Oxford takes about 1 hr; then take the 500 or S3 bus to Blenheim Palace.*

PADDINGTON WORKS ●

Private Studios | Co-Working | Meeting & Event Space

Join the home of
creative industries in the
heart of Paddington

For more information visit
www.paddingtonworks.com
or email info@paddingtonworks.com

Nº 1 Canalside Walk

BRUNEL • BUILDING

Paddington W2

*Exciting new 5,472 sq ft retail opportunity
coming soon to Brunel Building.*

Proudly unveiling a new restaurant and café space in a stylish 243,000 sq ft development fronting the Grand Union Canal. Located directly opposite one of Paddington Station's main entrances, the space benefits from extensive window frontage and generous outside seating.

Available from April 2019



Agents

Shelley Sandzer - 020 7580 3366

Ted Schama - tschama@shelleysandzer.co.uk Lauren Wellman - lwellman@shelleysandzer.co.uk

Shackleton - 020 7183 8571

Tony Moore - tony.moore@shackletonproperty.com Hannah White - hannah.white@shackletonproperty.com

 [derwent_london](https://www.instagram.com/derwent_london)

 Derwent London

 [derwentlondon](https://twitter.com/derwentlondon)

1canalsidewalk.london

DERWENT
LONDON