

Explore PADDINGTON

SUMMER/AUTUMN 2023

Sculpting THE CITY

BLAZING A TRAIL

Paddington's new public art

PRAED AND JOY

Discover the secret history of Praed Street

CANALSIDE CUISINE

Summery salads, sweet treats and home comforts in W2

WHAT'S ON | WHAT'S NEW | ITINERARIES | ALFRESCO DRINKS | MAP

PADDINGTON
THE PAWPRINT TRAIL

**Celebrating
25 years of
connecting
London
to the world >>**



**Heathrow
Express**

Book now at [HeathrowExpress.com](https://www.HeathrowExpress.com)

CONTENTS

4 MAP

Use our handy illustrated map

6 WHAT'S ON

Attend a dragon boat race, musical puppet show and outdoor bootcamp this summer

8 WHAT'S NEW

Craft beer and cake, what's not to like? Find both at new hot spots

10 WATERSIDE WONDERS

From a floating podcast studio to a cheese barge, the Grand Union Canal is full of surprises

12 LOCALS' ITINERARY

Fancy a pint? A pint of herbal jelly grass we mean. Then visit T4 after your yoga class

13 VISITORS' ITINERARY

Gather pals and wind down the canal on a GoBoat, then meander around Hyde Park

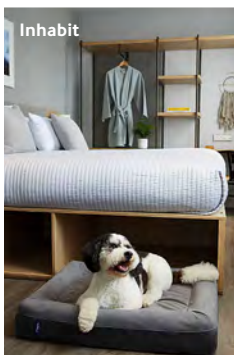
14 MAKING AN IMPRESSION

A photo that celebrates frontline workers and a rainbow-hued installation are just some of the outdoor artworks you can see around Paddington this summer

Ask Italian



Inhabit



18 STREETS AHEAD

Turn back time and discover the secret history of Praed Street, with its legendary nightclub, risqué cinema and rehearsal studio for a band that's now a household name

20 EAT

Whether you're craving Vegemite salad or Sticky Pig pizza, satisfy your tastebuds in Paddington

22 DRINK

Vegan pints, fig marmalade cocktails and tequila shots downed on the beach: it's all here

24 GIVE

Royal bingo, a sing-a-long and litter-picking by boat are some of the ways locals are giving back

26 CHANGE

All change! A new piazza, mall, amphitheatre and development is changing the face of Paddington

28 STAY

Hidden behind hotel doors you'll find a secret balcony bar, Pilates studio and a swish private dining room – if you know where to look

30 TOMORROW'S WORLD

Meet Jonathan Ring, the man behind Paddington Square

GET IN TOUCH

✉ magazine@paddingtonnow.co.uk #ExplorePaddington

🐦 @inpaddington 📷 inpaddington 📘 inpaddington 📺 www.youtube.com/user/PaddingtonLondon

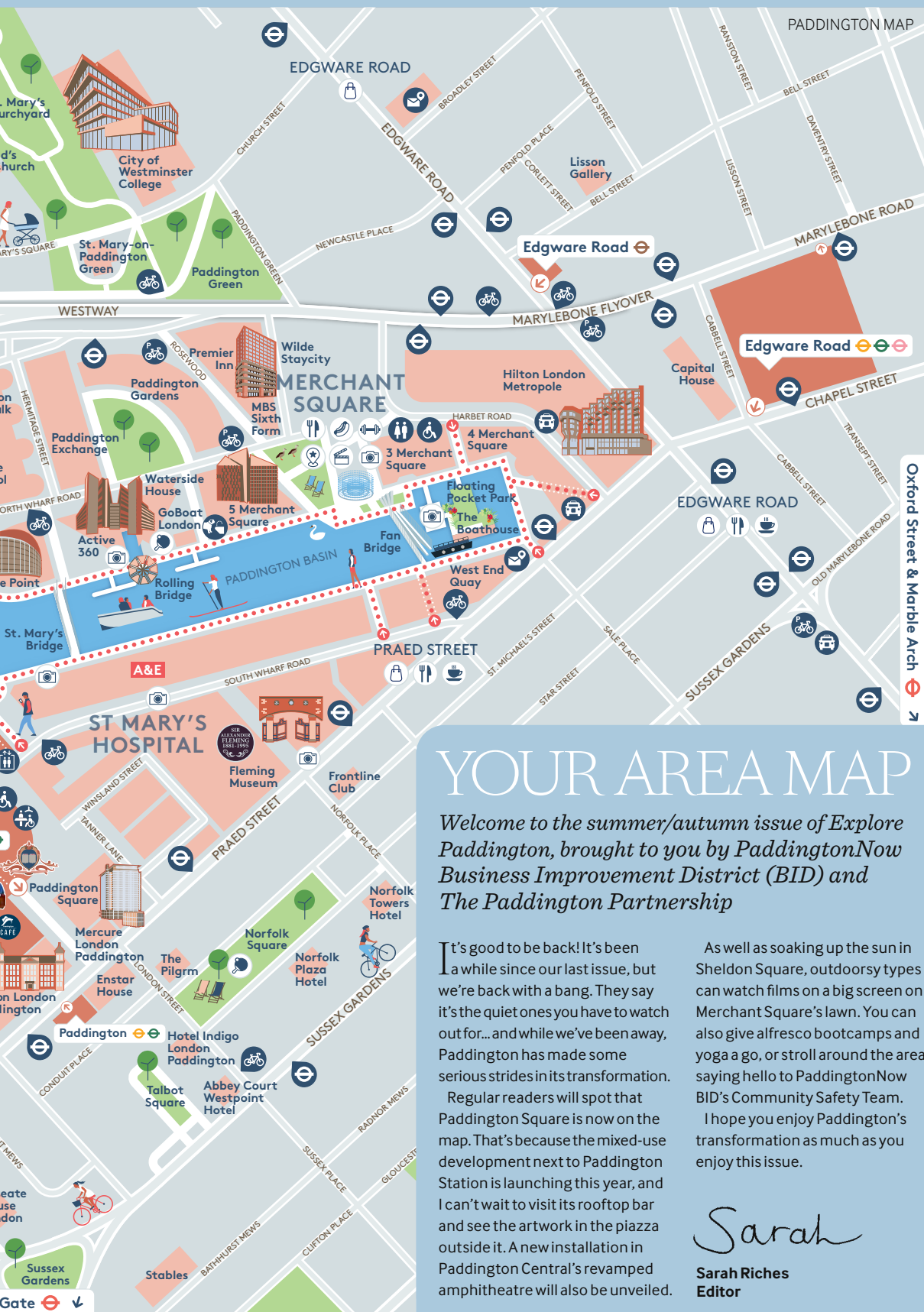
🌐 Listings: thisispaddington.com 🌐 Business: paddingtonnow.co.uk

Editor Sarah Riches Sub editor Anna Frame Contributors Jo Caird, Chloe Campbell Production Mel Needham Design Steve Davies, Mel Needham
Sales Rob Way: rob.way@tourismmediagroup.com Published by Tourism Media Group, tourismmediagroup.com



PADDINGTON™ and PADDINGTON BEAR™ © Paddington and Company Limited StudioCanal S.A.S. 2023. Paddington Bear™, Paddington™ and PB™ are trademarks of Paddington and Company Limited. Licensed on behalf of StudioCanal S.A.S. by Copyrights Group.

Hyde Park & Lancaster



YOUR AREA MAP

Welcome to the summer/autumn issue of Explore Paddington, brought to you by PaddingtonNow Business Improvement District (BID) and The Paddington Partnership

It's good to be back! It's been a while since our last issue, but we're back with a bang. They say it's the quiet ones you have to watch out for... and while we've been away, Paddington has made some serious strides in its transformation.

Regular readers will spot that Paddington Square is now on the map. That's because the mixed-use development next to Paddington Station is launching this year, and I can't wait to visit its rooftop bar and see the artwork in the piazza outside it. A new installation in Paddington Central's revamped amphitheatre will also be unveiled.

As well as soaking up the sun in Sheldon Square, outdoorsy types can watch films on a big screen on Merchant Square's lawn. You can also give alfresco bootcamps and yoga a go, or stroll around the area, saying hello to PaddingtonNow BID's Community Safety Team.

I hope you enjoy Paddington's transformation as much as you enjoy this issue.

Sarah

Sarah Riches
Editor

WHAT'S ON

All details are correct at time of going to print, but please check online in case they change

Watching a rubber duck race, rowing in a dragon boat contest and dancing to a DJ on a floating park are just some of the capers you can get up to this summer



Listen to live music on Floating Pocket Park

ONGOING

Tue: Don't know your cobra from your sphinx? Then it's time to find out in an alfresco Yoga in the Square class in June, July and August provided by Paddington Now BID and Live Karma Yoga. 10am-11am. FREE. *Norfolk Square Gardens, W2 1RU. paddingtonnow.co.uk.*

Wed & Fri: Marvel at Paddington's Fan Bridge, which unfolds like a Japanese hand fan twice a week at noon. FREE. *Merchant Square, W2 1AJ. 020 7298 2455. merchantsquare.co.uk.*

Fri: Listen to the Great Western Railway Paddington Band perform Mozart and pop. 7.30pm-9pm. FREE. *Paddington Station, W2. paddingtonrailwayband.co.uk.*

Hire an electric GoBoat and glide down the canal with your friends and a picnic. From £85. *Merchant Square, W2 1AS. 020 3887 6955. goboat.co.uk.*

Go paddleboarding with Active 360, which also offers natural history tours. *Paddington Basin, W2. 020 3393 5360. active360.co.uk.*

Visit the shop dedicated to Paddington™ Bear inside Paddington Station, then set off on the Pawprint Trail to look for statues of him. How many can you find? *W2 1HB. paddingtonnow.co.uk.*

Learn to knit or improve your English in a class at a local church. Some are free. *Grand Junction at St Mary Magdalene Church, Rowington Close, W2 5FT. 020 7266 8258. grandjunction.org.uk.*

Practise your ballroom moves at Dance Art. 1 Chilworth Mews, W2 3RG. 020 7402 0822. danceartlondon.com.

Struggle to switch off? At a 'sound bath' at Crystal Sound Lounge, a practitioner will tap crystal bowls to emit a soothing sound to send you to sleep. 51 Conduit Mews, W2 3RE. crystalsoundlounge.com.

Set up by a war correspondent, The Frontline Club hosts talks, seminars and photography exhibitions in honour of the founder's colleagues who died in the line of duty. 13 Norfolk Place, W2 1QJ. 020 7046 7065. frontlineclub.com.

JUNE

9 Jun: After starring in her own BBC sitcom and supporting Elton John on tour, Lulu McClatchy is performing her all-singing, all-dancing comedy show *SuperGirly – Return of the Pop Princess* to Canal Café Theatre. Expect killer vocals, outrageous lyrics and sharp wit set to pop hits. 7.30pm. £14-£16. *Delamere Terrace, W2 6NG. 020 7289 6054. canalcafetheatre.com.*

10-11 Jun: Original music scores and professional actors bring string marionettes to life aboard the Puppet Theatre Barge, which was established in 1982. Its latest show, *The Town Mouse and the Country Mouse*, is suitable for over threes. The barge will be moored in Little Venice until 25 June, after which it will visit Abingdon-on-Thames and Richmond – so make sure you and your kids catch it here while you still can. 11am & 2pm. Child £9; adult £13. *Little Venice, opposite 35 Blomfield Rd, W9 2PF. 020 7249 6876. puppetbarge.com.*



13, 20 & 27 Jun: Bend your body and perhaps your mind in a floating bootcamp with WildCat Fitness and James Colebrook. Book through Eventbrite. 6pm-7pm. FREE. *For details, see Merchant Square.*

15, 22 & 29 Jun: Sip drinks on a floating bar to chilled-out tunes mixed by DJ Lordah at Lockhouse every Thursday in June. 5pm-8pm. FREE. *For details, see Merchant Square.*

15, 22 & 29 Jun: Take a screen break in your lunchbreak and attend a music concert every Thursday in June. FREE. *For details, see Merchant Square.*

18 Jun: Treat your dad to a new Father's Day afternoon tea with single malt whiskies at Roseate House London. £40pp. 3 Westbourne Terrace, W2 3UL. 020 7479 6600. roseatehotels.com.

19 Jun-20 Aug: A charity that supports young wheelchair users is blazing a trail by creating a step-free route around Paddington and beyond that's scattered with sculptures depicting a children's cartoon character (pictured left). Whizz-Kidz will place 56 six-foot Morph sculptures from the eponymous '70s TV show along Morph's Epic Art Adventure, a free public art trail that will weave from the City of London, along the South Bank and in Paddington. morphsadventurelondon.com.

20 Jun: St James's Church hosts lunchtime concerts, as regular readers of *Explore Paddington* will already know. Don't miss pianist Lucy



Relax at a sound bath at Crystal Sound Lounge



Watch a rubber duck race

Don't forget to share your photos with us

#ExplorePaddington @inpaddington
inpaddington inpaddington
magazine@paddingtonnow.co.uk

AUGUST

1, 8, 15, 22 & 29 Aug: James Colebrook is on a mission to get you fit in a floating bootcamp every Tuesday. Will you rise to the challenge? 6pm-7pm. FREE. For details, see Merchant Square.

10 Aug: Over fives will love *Breathe*, a musical puppet show that takes them on a journey from the perspective of an acorn – from the bustling forest floor to dazzling icy branches. 11am & 2pm. Pay what you can. For details, see Grand Junction at St Mary Magdalene Church.

Barratt play Mozart, Poulenc and Franck. 1pm. FREE. *Sussex Gardens*, W2 3UD. 020 7262 9976. stjamespaddington.org.uk.

21 Jun: Celebrate International Yoga Day with a flow session on the lawn. Take your own mat. 6pm-7pm. FREE. For details, see Merchant Square.

From 24 Jun: Celebrate well-loved performers from the worlds of film, theatre, opera and pop, such as Whitney Houston, through photography and costumes in the V&A's *DIVA* exhibition, which runs until 7 April 2024. Adult £20. *Cromwell Rd, SW7 2RL*. vam.ac.uk.

26 Jun: Show your pride for Paddington on Take Pride in Paddington Day, and spruce up your shop front or front garden ahead of summer. paddingtonnow.co.uk.

26-30 Jun: World Wellbeing Week is an annual, international event which encourages activities that enhance physical, mental and emotional health. This year, PaddingtonNow BID is encouraging people to be active and aware and to connect, give and learn something new to keep their wellbeing intact. Check the website for daily activities. paddingtonnow.co.uk.

29 Jun: Help support the arts by listening to the Somali-British Poet Laureate Momtaza Mehri read her tender and satirical debut poetry collection *Bad Diaspora Poems*, which is influenced by displacement in the Horn of Africa during the 19th and 20th centuries. 7.30pm-8.30pm. Child £5; adult £8. For details, see Grand Junction at St Mary Magdalene Church.

JULY

3-16 Jul: Cheer on the Wimbledon competitors as you snack on M&S strawberries and watch a match on the big screen. 1pm-9pm. FREE. For details, see Merchant Square.

4 & 11 Jul: WildCat Fitness and James Colebrook put you through your paces at a bootcamp on Floating Pocket Park. Book through Eventbrite. 6pm-7pm. FREE. For details, see Merchant Square.

6-8 Jul: Watch the new theatre performance, *Olive Jar*, which celebrates west London's Middle Eastern and North African communities. The show is suitable for English and Arabic speakers. Daily 8.30pm. 8 Jul: 4.30pm. Child £6; adult £12. For details, see Grand Junction at St Mary Magdalene Church.

6, 13, 20 & 27 Jul: Order a summery cocktail on a floating bar in Paddington Basin. For details, see Merchant Square.

11 Jul: Listen to the San Marco Chamber Music Society, which has come all the way from Florida to perform the likes of Beethoven and Elgar in a church. 1pm. FREE. For details, see St James's Church.

27 Jul: Quack, quack! Paddington's rubber duck race is back, with coveted prizes including a pair of Eurostar tickets if your duck is first to make it over the finishing line. On the same day you can cheer on people in fancy dress as they participate in an annual dragon boat race. Both events aim to raise funds for COSMIC, a charity which supports children in intensive care at St Mary's Hospital. Noon-2pm. FREE, donation encouraged. For details, see Merchant Square. Donate via cosmiccharity.org.uk.



...AND ACTION!

2, 9 & 16 Aug, 6 & 13 Sep: Got strawberries, Pimm's and a blanket? Then settle down to watch a film on a big screen on Merchant Square's lawn. Coming up, you can take your pick from the 2004 hit teen comedy *Mean Girls*, starring Lindsay Lohan (2 Aug); the 2006 drama *The Devil Wears Prada*, which is about an aspiring journalist (9 Aug), and the 1999 teen romance *10 Things I Hate about You* (16 Aug), while funnyman Will Ferrell returns to the big screen as Ron Burgundy in *Anchorman* near the end of the month (30 Aug). Meanwhile, September sees Reese Witherspoon star as the charming Elle Woods in the 2001 comedy *Legally Blonde* (6 Sep). Round off summer cheering on a team of underdogs in *Dodgeball: A True Underdog Story*, which follows a team of misfits battling it out to win a tournament to save their gym (13 Sep). 6pm-8pm. FREE. For details, see Merchant Square.

WHAT'S NEW

It's all change in Paddington, and not just at the station. W2 now has an Inner Mongolian hot pot restaurant, gourmet coffee bars to rival Seattle and Melbourne, and a revamped Norfolk Square Gardens, just in time for summer picnics

COFFEE CULTURE

Know your *arabica* from your *liberica*? If you like a daily *cortado*, opt for a *ristretto* once in a while or own an AeroPress, then you're a bona fide coffee enthusiast.

Therefore, you'll be pleased to hear that **Treology** is now serving speciality coffee under the clock on Eastbourne Terrace.

You can also grab a cup of joe from **Frequency Coffee at The Point**, in Paddington Basin. Likewise, Brooklyn hipsters **Blank Street Coffee**, which opened mid-May, serves nutty cold brews without the hefty price tag – it keeps costs low by operating from compact spaces. Order through the app if you're in a hurry. **Treology**, 50 Eastbourne Terrace, W2 6LG. 07778 307656; **Blank Street Coffee**, 159 Praed St, W2 1RL; **Frequency Coffee at The Point**, The Point, 37 North Wharf Rd, W2 1AF. 020 7813 7931.

thepointpaddington.com

Meanwhile, if you are lucky enough to work in Paddington Square, rumour has it local favourite **Harrison's Coffee** is opening a second branch in



Tucka Burger



Treology

The Exchange, near its reception and offices. Grab a takeaway coffee or Chilean snacks such as *alfajor* (biscuit and caramel sandwiches), served by its Chilean owners who are as full of beans as the coffee they serve. 128-142 Praed St, W2 1DL.

TREAT TIME

We get it. You've had a long week at work or you've been pounding the pavements sightseeing all day. Now you just want a sit down and a little treat.

Step forward **Merchant Square's new food trucks**. Choose from Katsu King's crispy chicken, Aloo Tama's Nepalese Momo dumplings and Tucka Burger's messy-but-worth-it patties. W2 1AJ. 020 7298 2455. merchantsquare.co.uk.

Now it's time for dessert. With neon script lights and interiors as pink as candyfloss, **Venice London** is bang on trend – and its cakes are works of art. 16 Spring St, W2 3RA. 020 7121 0003. venicelondon.co.uk.

It's all happening on Spring Street. If you don't have a sweet tooth, then treat yourself to a craft beer at **The Bear** instead. Run by school friends – the team behind The Craft Beer Co. – it serves six real ales, 29 keg beers and more than 200 bottled beers. 27 Spring St, W2 1JA. thebearpaddington.com.



WINE AND DINE

Paddington's foodie scene is as multicultural as the passengers travelling to and from the area on the Heathrow Express.

Craving Inner Mongolian? Thought so – so dine on **Happy Lamb Hot Pot's** legendary lamb stew, made with 36 ingredients. **Happy Lamb Hot Pot**, 82-84 Bishop's Bridge Rd, W2 6BB. 020 7221 5537. happylambuk.com.

If you'd prefer something more familiar, then opt for pizza and pasta at **Vapiano**, which opened in December 2022. Take advantage of its Vappy Hour – two for one cocktails between 3pm and 6pm Monday to Thursday.

You can also try European dishes at the spruced-up townhouse **Vela Brasserie**, which features an on-trend faux leafy wall and neon lights.

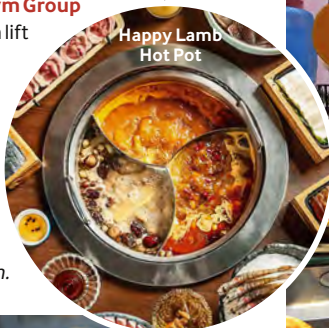
The Cork & Bottle is another smart option, and it has returned to the area – bringing its 300-strong wine list to The Frontline Club's restaurant. **Vapiano**, 50 Eastbourne Terrace, W2 3PX. 020 7062 7743. uk.vapiano.com; **Vela Brasserie**, 8-9 Sale Place, W2 1PH. 07389 715808. velabrasserie.co.uk; **Cork & Bottle at The Frontline Club**, 13 Norfolk Place, W2 1QJ. 020 7046 7060. frontlineclub.com.



Frequency Coffee at The Point

✉ magazine@paddingtonnow.co.uk

33 North Wharf Rd,
Merchant Square, W2
1LA. thegymgroup.com.



When you're exploring Paddington you may spot **PaddingtonNow Business Improvement District (BID)**'s Community Safety Team. As well as having new uniforms, the team of four security professionals have increased responsibilities so they carry handcuffs and sometimes patrol with dogs. They work with the police, Westminster Council, property managers and support services to patrol the BID five days a week, 14 hours a day to address anti-social behaviour such as littering and fly-tipping. If you see them out and about, give them a wave – they can also help with directions or local recommendations. Their patrol from 9am to 11pm Tuesday to Saturday. 07719 529892. paddingtonnow.co.uk.



Keen-eyed locals will notice **Norfolk Square Gardens** has freshly laid turf, just in time for summer picnics.
020 3145 1212. paddingtonnow.co.uk.

PADDINGTON'S PRIDE

When the 22km stretch of the Grand Union Canal known as the Paddington Arm opened in 1801, Paddington was just a village surrounded by meadows. No one, back then, could have imagined that one day it'd be home to a floating podcast studio, samba nights and a barge with a weekly fondue night...
...Yet while swans, herons, geese and coots can still be spotted in the water, just like in 1801, and the grand Regency mansions built around Little Venice remain – everything else has changed.

CANAL CULTURE

The floating podcast studio and radio station **The BoAt Pod** in Little Venice is just one of the businesses that show that Paddington is well and truly in the 21st century.

Keen radio listeners can tune in to soul by Bailey on the first Wednesday evening of the month, presenter Alena Arpelson on the second Sunday afternoon of every month and jazz, punk and new wave tunes fused with golden oldies the rest of the time. If you're musically minded, you can also record a podcast or DJ mix.

More of a film fan? Then clear your diary for **Little Venice Film Festival** (22 to 27 August). The festival aims to promote budding filmmakers by championing the work of underrepresented voices, from women to the LGBTQ+ community.



If you have made a feature, animation, documentary or short, submit it by 10 July for the chance to win an award. The best entries will be screened at Canal Café Theatre and Grand Junction at St Mary Magdalene Church, with most events designed to accommodate people with disabilities.

The BoAt Pod, Warwick Crescent, W2 6NE. 020 7266 5248, theboatpod.com; Little Venice Film Festival, W2. 07570 243115. littlevenicefilmfestival.org.

TOUR DE FORCE

Once you've posted The BoAt Pod on Instagram, watched a film at the festival and looped Browning's Island in Little Venice, then it'll be time to explore further afield on one of the narrowboats that run tours from the canal junction along the Regent's Canal to Camden and back. Along the way you'll pass through the 248m-long Maida Hill Tunnel – which was completed in 1816 – before drifting through Regent's Park and past ZSL London Zoo.

Jason's Trip has been operating since 1951, on a boat dating back to 1906. If you're a history buff, then this tour's for you, as your guide will provide live commentary about the canal's history.

Prefer to just kick back and unwind? Then hop on a boat with the **London**

Waterbus Company for a 90-minute round trip to Camden. All of its boats have large windows that you can open, so you can take photos along the way.

If you'd prefer a more intimate experience, then charter **Lady A**. Built in 2004 in the style of a traditional narrowboat, the contemporary 13m by 2m vessel is ideal for groups of eight, although it can squeeze in up to 10. When the sun's shining, sit on the front deck outside; a canopy and waterproof curtains provide shelter in case of rain.

With its heated seats and blankets, **GoBoat** goes the extra mile – plus it's dog-friendly to boot. Pack a picnic, grab





GoBoat



The Grand Duchess

a selfie stick and some mates and you'll be all set to captain your own electric boat. Since the firm launched in 2017, it's been a hit with residents and visitors who are keen to hire one of its boats for a one-hour jaunt or three-hour stint. Once you've mastered the basics, you can glide along the water from Paddington Basin to Camden Lock and back. Ahoy there!
Jason's Trip, opposite 42 Blomfield Rd, W9 2PF. jasons.co.uk; *London Waterbus Company*, Waterbus Wharf, Browning's



Darcie & May Green



Cheese Barge

Pool, Blomfield Rd, W9 2PF. londonwaterbus.com; *Lady A*, opposite 34 Blomfield Rd, W9 2PF. 07899 800856. canaldrivercruises.com; *GoBoat*, Merchant Square, W2 1AS. 020 3887 6955. goboat.co.uk.

ALL ABOARD

Once you have explored you will be ready to eat, and when it comes to stylish dining spots, Paddington delivers.

If you want to push the boat out, then **The Prince Regent** is the obvious choice, as it hosts intimate lunch and dinner cruises to Camden. Its static sister restaurant, **The Grand Duchess**, has capacity for 40, with more seats on the towpath each summer. Inside is all port holes, stripy navy and white blinds and a white-washed wooden ceiling, while on your plate you can expect dishes such as ray wing, confit onions and chicken butter.



The Prince Regent

Head chef Sara Lewis at **The Cheese Bar's Cheese Barge** meanwhile is launching a new summer menu in June, staying true to its British cheese ethos – visit Tuesday to Friday noon till 3pm to take advantage of its two-course set lunch (£15). Sit on its newly redecorated roof terrace and pair your lunch with a glass of Piquepoul rosé from its new drinks menu. More of a cocktail drinker? Floral Gin Fizz blends East London Liquor Co Kew Gardens' gin with Prosecco, elderflower and lime.

Here's hoping we'll be in for another Indian summer, but if autumn does come early, then **The Cheese Barge** is prepared.

In the last week of October, it will relaunch its weekly Fondue Thursday event, which will run until March 2024. You'll get to try two house fondues and a third guest collaboration fondue – in 2022 it teamed up with the Japanese ramen joint Bone Daddies and Jay Morjaria of *My Million Pound Menu* fame to bring yuzu fondue, banana ketchup pork belly skewers and truffle sliders, so we have high hopes for what this year's menu will provide.

Look out for a statement-making pair of boats covered with bespoke artwork by the 'godfather' of British pop art, Sir Peter Blake. **Darcie & May Green** serve juicy burgers, such as a vegan patty with sweet Korean barbecue sauce, pickled ginger, burnt aubergine and a rich cashew cream. If you think that sounds tempting, then wait till you try the Dirty Daisy, one of the boats' most popular brunch dishes.

The Prince Regent and The Grand Duchess, Sheldon Square, W2 6PY. 07553 033636. londonshellco.com; *The Cheese Barge*, Sheldon Square, W2 6DL. 07862 001418. thecheesebar.com; *Darcie & May*, Sheldon Square, W2 6DS. 020 3935 9045. daisygreenfood.com.

Locals: plan your day

After a Peruvian breakfast and an alfresco yoga class in the sunshine, mingle with your neighbours over an ice-cold Taiwanese taro drink



8.30AM At **Harrison's Coffee**, swap your morning muesli for a freshly made crusty *marraqueta* roll – the perfect accompaniment to a Chilean coffee. 3 Spring St, W2 3RA.

10AM Practise sun salutations in the great outdoors in a **Yoga in the Square** session. They take place every Tuesday throughout June, July and August. 10am-11am. FREE. Norfolk Square Gardens, W2 1RU. paddingtonnow.co.uk.

11AM Join your new yoga pals or invite a neighbour for an iced milk tea from **T4**. Take your pick from Taiwanese taro or mulberry, and give East Asia's herbal grass jelly a go if you're feeling adventurous. 4b Praed St, W2 1JX. 020 7258 7488. t4.co.uk.

NOON Graze on sharing plates such as stuffed vine leaves dunked into creamy cucumber and mint yoghurt or beetroot and feta dip at the Turkish restaurant **Hayat**. 6 Spring St, W2 3RA. 020 8306 6278. hayatrestaurant.co.uk.

1PM Take a pew and unwind at a classical concert in **St James's Church**, which hosts regular performances at lunchtime. 1pm-2pm. FREE. Sussex Gardens, W2 3UD. stjamespaddington.org.uk.

3PM Have a cheeky afternoon pint at **The Bear's** swish countertop, which is made from *kevazingo* wood sourced from West Africa. The newcomer specialises in craft beer sourced from small, independent producers. 27 Spring St, W2 1JA. thebearpaddington.com.

7PM Feast on wasabi prawn dumplings and Peking duck at **Pearl Liang**. 8 Sheldon Square, W2 6EZ. 020 7289 7000. pearlliang.co.uk.

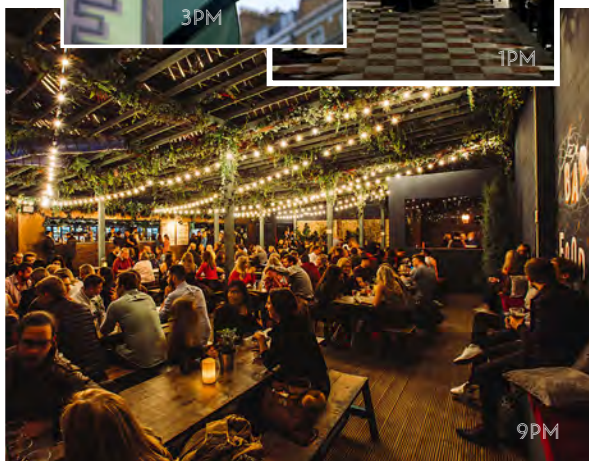
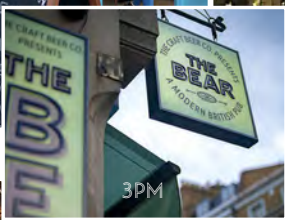
9PM **Pergola Paddington** was designed for sizzling summer nights. Head to its rooftop bar or squeeze on to a communal table beneath the pergola. 5 Kingdom St, W2 6PY. pergolapaddington.com.



Pop out for lunch



Attend a concert



Visitors: plan your day

Don a cap and charter your own boat along the Grand Union Canal before circling Hyde Park with your family or friends

9AM Kick start your day with eggs Florentine at **Venice London**. 16 Spring St, W2 3RA. 020 7121 0003. venicelondon.co.uk.

9.30AM Grab a takeaway coffee from **Gail's** before you embark on a morning stroll. **Paddington Basin**, W2 1LA. gailsbread.co.uk.

10AM Say good morning to our beloved local celebrity Paddington™ Bear and his new friends "The Paparazzi Dogs," a set of bronze sculptures by the artists Gillie and Marc. They'll be in **Norfolk Square Gardens** from June to December. W2 1RU. paddingtonnow.co.uk.

11AM Hire an electric **GoBoat** from Paddington Basin and glide down the canal to Little Venice. You can captain the vessel yourself – no experience required – and continue to Regent's Park, Camden Lock and back. **Merchant Square**, W2 1AS. 020 3887 6955. goboat.co.uk.

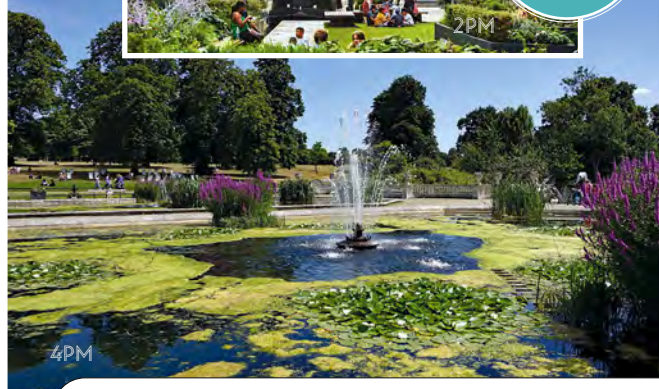
12.30PM How does Japanese sticky fried chicken with toasted sesame seeds, chilli, spring onions and Korean barbecue sauce sound? Eat it in the beer garden at **Fountains Abbey**, an old-school pub built in 1823. 109 Praed St, W2 1RL. 020 7723 2364. greeneking-pubs.co.uk.

2PM Spend a few hours basking in the sunshine as you rest on the **Floating Pocket Park**. **Merchant Square**, W2 1AJ. 020 7298 2455. merchantsquare.co.uk.

4PM Stroll around the Italian Gardens in **Hyde Park**. Gardeners created the ornamental pond in the 1860s, inspired by Queen Victoria's summer home on the Isle of Wight. 0300 061 2000. royalparks.org.uk.

7PM Make the most of the long nights and dine in the beer garden at **The Monkey Puzzle**. We'll have the house sharing board followed by hot cookie dough with ice cream, please. 30 Southwick St, W2 1JQ. 020 7723 0143. themonkeypuzzlepub.co.uk.

9PM Sink into a velvet sofa surrounded by vintage leather suitcases as you sip London-inspired cocktails at **146 Paddington**, a hotel bar next to Paddington Station. **Hilton London Paddington**, 146 Praed St, W2 1EE. hilton.com.



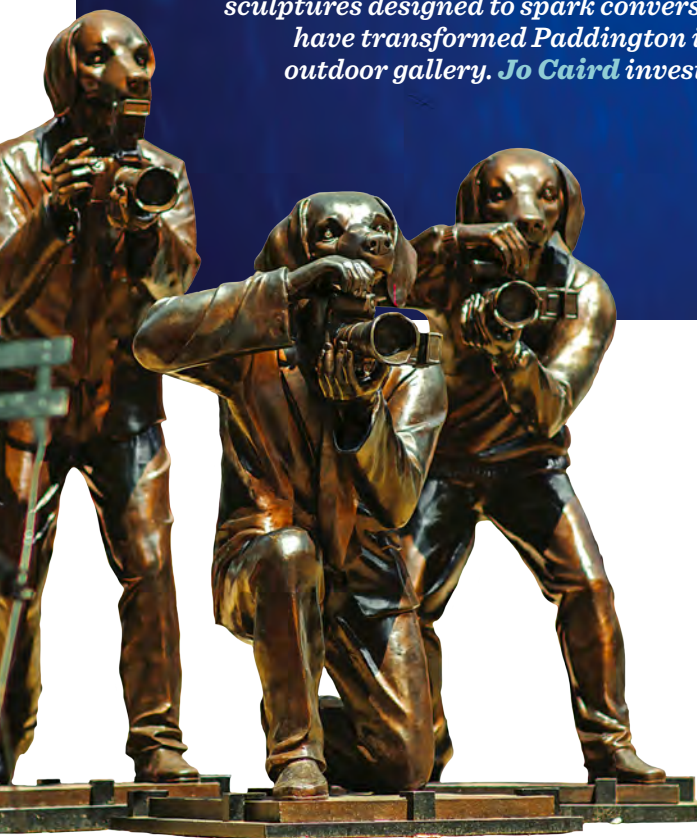
What's your favourite place in Paddington?

#ExplorePaddington ✉ magazine@paddingtonnow.co.uk

🐼 @inpaddington 📷 inpaddington 📺 inpaddington

The inside track on OUTSIDE ART

A host of new murals, installations and sculptures designed to spark conversations have transformed Paddington into an outdoor gallery. Jo Caird investigates



Public art gets people talking. Whether it's the Fourth Plinth commission in Trafalgar Square or ArcelorMittal Orbit's "Helter Skelter" in Queen Elizabeth Olympic Park, outdoor artworks are an easy meeting point and bring colour, texture and a sense of playfulness to our urban environment.

Paddington is a hot spot for public art commissions by international artists inspired by its past. Stroll around the neighbourhood and you're confronted, time and again, with innovative sculptures, installations and murals engaging with the neighbourhood's unique history.

The area's latest works will soon be in Paddington Square, a new piazza connected to the station that's home to shops, restaurants, offices and a mixed-use building with the same name that's designed by Renzo Piano. Paddington Square will be home to four new commissions – three permanent and one rotational.



“The Paparazzi Dogs”

Who let the dogs out? Gillie and Marc, that’s who. The artists are hoping that when their four bronze statues – “The Paparazzi Dogs” – are placed in Norfolk Square Gardens this summer, they will get people talking – and snapping photos.

The British and Australian duo have garnered a global reputation for sculptures depicting the natural world, and “The Paparazzi Dogs” comes via Melbourne, Sydney, Shanghai and New York. The pieces will flank “Paddingtonscape” – because we all know how much of a celebrity Paddington™ bear is.

The Showroom

The public contemporary art space The Showroom, based near Paddington Square, works to showcase critical emerging and mid-career artists working in the UK. It is partnering with creatives to launch a series of collaborative murals at Tanner Lane, situated between Paddington Square and St Mary’s Hospital.

Kathrin Böhm will launch the series with a piece which asks: why do we care about art? Böhm explored individual responses to this question through poster-making workshops and created a mural which drew on the statements curated by each contributor, projecting the chorus of their voices.

Böhm’s work will be followed by Long Distance Press (Adam Shield and Thomas Whittle), developed through a collaborative process including community engagement workshops. The artwork cycle creates a new context for The Showroom’s programme in Paddington, allowing a wide audience of visitors, workers and local residents to enjoy and engage with contemporary art practice.

Photographic installation

A homage to the NHS, Catherine Yass will be taking over a 24m-long wall on Tanner Lane, on the corner of Winsland Street, to deliver a large-scale collaborative photographic installation featuring and celebrating the service’s workers. The position – adjoining St Mary’s Hospital – is no coincidence, as Yass likes to explore the relationship between public buildings and their occupants.



Clockwise from above: “See Paddington”; The Showroom; “The Paparazzi Dogs” by Gillie and Marc; Main image: Catherine Yass’s “NHS Swimmers”. Image indicative of the artist’s style and a taster of what’s to come on Tanner Lane

The artist shot 10 NHS workers individually in a custom-built glass pool. The image to the left, “NHS Swimmers”, although not the artwork that will be in situ, is indicative of Catherine Yass’s style.

Monumental work

Another of the permanent pieces that will be revealed when the new development opens later this year is a freestanding monumental 3D abstract work, intended to be a memorable photo opportunity and a meeting point – so soon you may find yourself telling a friend to meet you by the ‘tall bright artwork’, and they’ll know exactly where you mean.

The sculpture will stand on a new path called The Street, tucked beneath the first floor of the Paddington Square building, near its entrance.

This work is the creative vision of the Swiss-born, New York City-based artist Ugo Rondinone, who has garnered a reputation for producing fun, site-specific public works that often feature abstract figures or rainbows, clowns and totem poles.

It will be Rondinone’s first permanent public artwork in the UK, although you may be familiar with “Liverpool Mountain” (2018), a temporary 10m-high totem of fluorescent rocks that stands outside Tate Liverpool. The piece earned deserved critical acclaim when it was unveiled.

Flying high

Like Rondinone’s work, the art produced by American artist Pae White will feature vibrant colours. The permanent work will be suspended within the building and will be visible as you travel from the new London Underground station into the ▶



▶ Paddington Square building, and from various spots within the building and square.

Based in Los Angeles, White specialises in brightly coloured installations with dynamic textures that transform functional public areas. One of her best known works is "The Magic Carpet" (2017) – a 100m long lipstick red sculpture that hangs above an escalator in the departure terminal of Berlin Brandenburg Airport.

"Abundance"

The London artist and designer Adam Nathaniel Furman was born in St Mary's Hospital in Paddington.

Furman's latest work, "Abundance", will be showcased on South Walkway when Sheldon Square's revamped amphitheatre is unveiled this summer.

The permanent installation will add a pop of colour to the promenade's façade, promising to brighten up the days of office workers, locals and visitors as they walk from Paddington Station to Kingdom Street, above Nuffield Health Paddington, Pret A Manger and Itsu.

Reminiscent of Liz West's "Colour Transfer" beneath the nearby Westway, the 52m long work is inspired by the amphitheatre's new greenery. Mimicking the hues of nature, it will be a rainbow of greens, yellows, pinks and blues.

The art wall will consist of 74 panels folded like ripples on the Grand Union Canal, and in a nod to Paddington's industrial heritage, the work will be made from sheets of aluminium. Adam explains, "The artwork is inspired by a combination of three things: the colours of an English garden all throughout the year – specifically the plants in the amphitheatre – the sheet piles of the buildings in the surrounding area, and the elegant folds of origami."

"Real Time"

Just around the corner from Paddington Square, at 7.8m above the entrance to 50 Eastbourne Terrace, you'll find "Real Time," a 12-hour film by the Dutch artist

and designer Maarten Baas that shows a man inside a clock painting and repairing its hands.

The work is part of a series of "Real Time" clocks that explores different characters – mostly self-portraits – playing with the physicality of clock time. Baas presented three versions of the idea at the Salone Del Mobile in Milan, Italy in 2009; the Paddington version, which debuted in 2021, was the UK's first.

Baas says, "I wanted to make a typical English clock, like the old ones you see in the streets. I'm well dressed, in a nice suit, in the style of Brunel. Every now and then I even wear a hat while I'm painting." Baas identifies as an artist more than as a designer but it's important to him that



Clockwise from top left:
 "ThePaparazzi Dogs"; Maarten Baas's "Real Time" clock; Rona Smith's "Abeona"; "Preventing wildlife from becoming still life"; "See Paddington" trail leading to Paddington Square; "Colour Transfer" by Liz West





"Real Time" is a working clock. "The fact it indicates the correct time makes the piece conceptually stronger," he explains. "It's accessible for everybody".

"See Paddington"

Just as the Paddington™ bear sculptures dotted around the area are inspired by a children's tale, "See Paddington" also has a literary flavour. The narrative trail along the towpath connects Bishop's Bridge and South Wharf Road.

Curated by the poets Jo Bell and Sophie Herxheimer, the poem brings together stories of Paddington locals, from primary school children and local politicians to hospital and Heathrow Express staff and progressively reveals Paddington through a coordinated package of interventions. There are three themes to discover: Nature highlights the local natural environment, Heritage celebrates the archaeological and scientific pioneers that have made a significant contribution to Paddington over the years and Personal Connections uncovers everyday life in Paddington through the eyes of those who know and love the area most.

"Abeona"

Sale Place, a short stroll from South Walkway, is home to Rona Smith's "Abeona", which graces the offices of advertising firm JCDcaux. Installed in 2022, but five years in the making, the 15m-tall bronze explores the notion of travel, taking Paddington Station as the inspiration behind its train track-like structure.

Smith explains, "The form is taken directly from pen and ink drawings

I made of the railway switches at Paddington Station and it's the sketched, wavering pen on paper that gives the sculpture its organic quality."

Its title is well chosen, as it is a reference to the Roman goddess of outbound travel, a protector of travellers, particularly children.

"I wanted to capture the thrill of the start of an epic journey, whether that is in the literal sense for example by rail or plane, or in a more subtle, evocative sense such as a child's first steps." She goes on, "I want members of the public to recognise the form of train tracks within the sculpture and think about the pathways and tracks that connect us in our work, communities and relationships."

"Preventing wildlife from becoming still life"

Smith's train tracks bring us full circle, as a new mural by the British artist Cindy Powell was installed this spring near the entrance to the Hammersmith and City line at Paddington Station.

Originally 60cm by 75cm, Powell's five oil paintings were photographed then printed on a large scale.

The work, which depicts a Great Western Railway train and British wildlife, highlights Network Rail's commitment to protecting the environment along its railway lines – the firm has vowed its land won't lose any species from 2024, and to increase biodiversity by the end of 2035. Its name, then – "Preventing wildlife from becoming still life" – is perfectly apt.

The mural is yet another example of the moving art you can experience while on the move in Paddington.



SECRETS OF PRAED STREET W2

CITY OF WESTMINSTER

From detectives to DJs, *Sarah Riches* goes on the beat to discover **Praed Street**'s creative past

If walls could talk, Praed Street's buildings might whisper secrets from The Clash's first audition, a former saucy cinema or DJ Count Suckle's legendary nightclub. But we'll have to make do with peeling back the wallpaper instead – and the layers of history beneath reveal Praed Street's part in creating London's literary, music and film scene.

1910s

A chapel is the unlikely foundation for an erotic cinema but **Praed Street** has never been one to toe the line. In 1910, a former place of worship at number 5 was converted into a 400-seat, single-screen cinema.

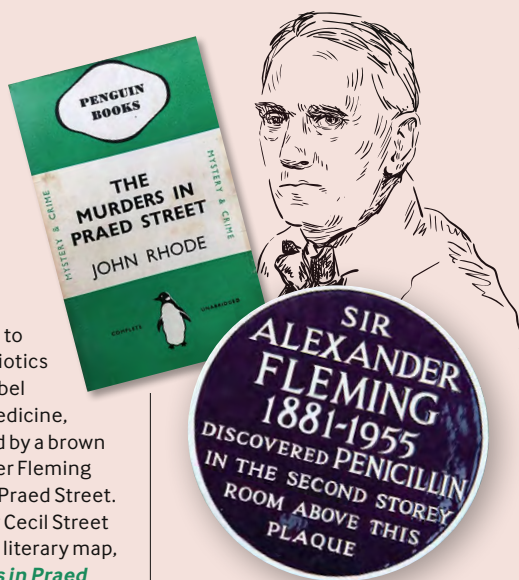


Topped with illuminated domes, **Electric Theatre** dazzled. While new owners did away with the domes in the 1920s, they introduced a resident orchestra to accompany silent films, while newsreels were favoured in the war years. By 1957, the newly named Classic Cinema was screening less salubrious films until its closure in 1986. It was transformed into offices three years later.

1920s

It was all happening on Paddington's main thoroughfare in 1928, when **Dr Alexander Fleming** discovered penicillin at St Mary's Hospital. The finding led to Fleming inventing antibiotics and being awarded a Nobel Prize in Physiology or Medicine, and today he's honoured by a brown plaque outside Alexander Fleming Laboratory Museum on Praed Street.

That same year, author Cecil Street put **Praed Street** on the literary map, publishing *The Murders in Praed Street* under the pen name John Rhode. The novel was the fourth in a gripping series about a serial killer and an armchair detective. The



murder mystery was such a hit that it was adapted into the Warner Bros. film *Twelve Good Men* in 1936.

1940s

Cecil Street wasn't the only author to set a novel in the area. Inspired by Arthur Conan Doyle's series about the fictional detective Sherlock Holmes and his sidekick Dr Watson, writer August Derleth created detective **Solar Pons** and **Dr Lyndon Parker**, who lived at **7b Praed Street**.

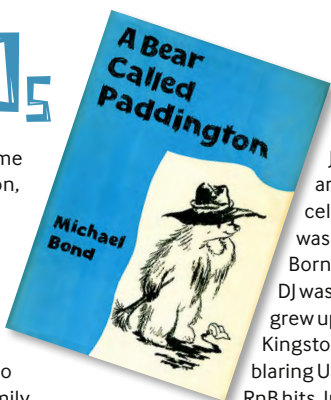
Derleth published his first book about Solar Pons's escapades, *In Re: Sherlock Holmes: The Adventures of Solar Pons*, in 1945.

As for number 7, well, today it's occupied by **The Paddington Partnership** – part of the team behind *Explore Paddington*. Clearly publishing runs through Praed Street's veins.



1950s

Of course, as the home of Paddington Station, **Praed Street** is synonymous with **Paddington™ Bear**. The lead character in Michael Bond's children's stories is a bear from Peru, who meets the Brown family shortly after arriving at the station. Bond's first novel, **A Bear Called Paddington**, was published in 1958. Look out for the bronze bear statue inside the station.



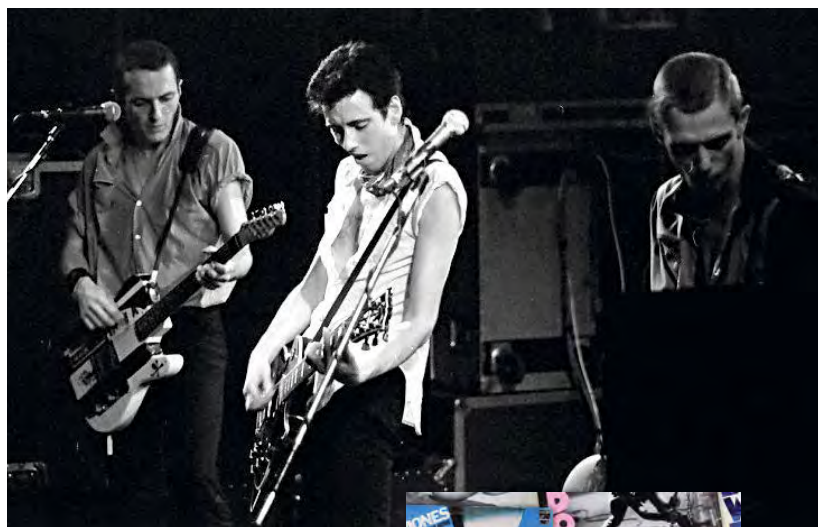
Just as Paddington was arriving from Peru, the celebrated **DJ Count Suckle** was arriving from Jamaica. Born Wilbert Campbell, the DJ was one of 13 children who grew up in a poor part of Kingston, listening to speakers blaring US big band tunes and RnB hits. Influenced by the sounds, Suckle sold records at gigs before stowing away on a banana boat and entering the UK in 1954. Shortly after he arrived, he began DJ-ing in Notting Hill. Fast forward to 1961, and he was

playing RnB, new ska and reggae at Carnaby Street's Roaring Twenties club, attracting the likes of Mick Jagger.

In 1966 Suckle started his own venue, **Cue Club** at **5a Praed Street** no less, next to modern-day Pret a Manger. With a capacity for 700, the club played new sounds from Jamaica and Black acts such as The Drifters, Ben E King and Jimi Hendrix – drawing Marvin Gaye, Bob Marley and Muhammad Ali to the dance floor. The club triumphed until the mid-1980s, after which Suckle could be spotted driving his Rolls-Royce around London.

1960s

A year after Suckle's Cue Club opened, the American author Ira Levin published his 1967 fictional horror – and **Praed Street** got another 15 minutes of fame. **Rosemary's Baby** follows a couple living in a haunted house when the woman falls pregnant with a demon child. Five million readers read, *There was a house in London, on Praed Street, in which five separate brutal murders took place within 60 years... In a small house with a shop on the street and an apartment overhead*. The book spawned not just the devil but a film, TV adaptations and print sequel, too.



1970s

Praed Street's alleged connections with Satan didn't put off **The Clash**, who hosted their first audition and rehearsal in the basement of 113-115 **Praed Street**. Who knew that the British punk rockers – then made up of Joe Strummer, Mick Jones, Paul Simonon, Keith Levene and Terry



Chimes – were playing beneath the then Paddington Kitchen? Keen Clash fans may wish to visit the site, which is now **Zanchi Korean Restaurant**.

2023

PRÆD STREET has always been streets ahead of its game, and with major changes on their way, that will remain the case for the next 100 years and beyond.

Happiness is...

The warmth of the sun on your back, the comforting scent of a pub or a cake eaten with friends – whatever happiness means to you, you'll find it here in Paddington

... SUMMERY SALADS

Vegemite salad? Rocket mustard dressing? Salads needn't be boring in Paddington. **Beany Green** serves butternut squash mash, roast potato and coriander pesto salads from Monday to Friday at lunchtime. You can also go rogue and order its red salad with Vegemite dressing.

Meanwhile, **Vapiano's** inaugural summer menu features beef fillet salad with rocket mustard dressing, which will keep you going till dinnertime. If you prefer a lighter dish, try **It's All Greek to Me's** Cretan salad, made with dakos (barley rusks), Greek feta, tomatoes and olives drizzled with Greek extra-virgin olive oil.

Beany Green, Sheldon Square, W2 6EZ. 020 7289 3344. daisygreenfood.com; **Vapiano**, 50 Eastbourne Terrace, W2 3PX. 020 7062 7743. uk.vapiano.com; **It's All Greek to Me**, 101 Praed St, W2 1NT. 020 7402 5505. itsallgreekto.me/london



Vapiano

20 Eastbourne Terrace's ground floor **Rise Café** or 17th floor rooftop; with its potted plants and city views, you won't be in a hurry to return to work. Closer to the station, you can order orzo pasta with caramelised onions from family-run **Lena's Café**. **Sandro** meanwhile is popular with office workers and residents returning for tortillas served with a smile.

Torelli Pita Souvlaki, Canal Side Walk, W2 1AS; **Merchant Square**, W2 1AJ. 020 7298 2455. merchantsquare.co.uk; **Rise Café** and rooftop at 20 Eastbourne Terrace, W2 6LG. 020 3545 0855. eastbourneterrace.com; **Lena's Café**, 83 Praed St, W2 1NT. 020 7402 7776. lenascfe.com; **Sandro**, 22 Spring St, W2 1JA. 020 7723 9847.

... CHEESE!

Just like chocolate and strawberries, it's hard not to love cheese. Fromage fans can gorge on the stuff on **The Cheese Bar's** 29m-long cheese barge. As the name suggests, its menu is rather cheesy, with dishes including rarebit, cheeseboards

and half a kilo of Baked Baron. The firm champions British varieties such as Londonshire, made by Wildes Cheese in Tottenham, and mozzarella produced by



Katsu King food truck

La Latteria in Acton. If the barge is fully booked, dunk garlic bread and mozzarella arancini into fondue at **Zizzi** next door, saving space for its new Sticky Pig pizza. **The Cheese Barge**, Sheldon Square, W2 6DL. 07862 001418. thecheesebar.com; **Zizzi**, 17 Sheldon Square, W2 6EP. 020 3302 1895. zizzi.co.uk

... ALFRESCO DINING

If you grew up in northern Europe, then eating outside never stops feeling special. Dine among plants and parasols on **Bondi Green's** heated canalside terrace, which was made for lazy birthday lunches. Order a wood-fired pizza and pair it with Australian wine from its 120-bottle menu. Alternatively, dine on **Wagamama's** terrace in Sheldon Square. **Ask Italian** meanwhile is to the south of Paddington Station. It may lack a waterfront, but its suntrap terrace and



... FAST AND FRESH

Whether you're on a budget or a deadline, Paddington has plenty of quick lunch spots. Keen to eat by the canal? Then order Greek bites from **Torelli Pita Souvlaki**, a silver Airstream caravan, or street food from Simply Shawarma, Holy Guacamole, Rice Guys or Katsu King in **Merchant Square**. Alternatively, grab a bite from



new wraparound mural make up for it. **Bondi Green**, 1-2 Canalside Walk, W2 1DG. 020 3325 1340. daisygreenfood.com; **Wagamama**, 3 Sheldon Square, W2 6HY. wagamama.com. **Ask Italian**, 41-43 Spring St, W2 1JA. 020 3302 0915. askitalian.co.uk.

... COMFORT FOOD

Chilean alfajores and Vegemite salads are all well and good but sometimes you just want something familiar. If that's the case, head to **Lockhouse** in Paddington Basin for burgers, pies and bangers and mash, or order pizza at **Heist Bank** – we like the sound of the ricotta, woodland mushroom and watercress. Alternatively, cross the nearby footbridge and nab a table outside **The Union** – its flat-iron steak on toasted sourdough will keep you going. Head south to **Sawyers Arms** for more pub classics including slow-cooked pork belly, or **The Pride of Paddington** for pies. **Vela Brasserie**, nearby, serves European comfort food such as aubergine Parmigiana and a messy Guilty Pleasure beef burger. The restaurant is co-owned by London Irish rugby players Adam Coleman and Agustín Creevy and the former Barcelona footballer Maximiliano Gastón López, so you might spot them – hopefully not while you're eating that burger though. **Lockhouse**, 3 Merchant Square, W2 1AZ. 020 7706 4253. lockhouse.london.com; **Heist Bank**, 5 North Wharf Rd, W2 1LA. 020 7723 8080. heistbank.com; **The Union**, Sheldon Square, W2 6EZ. 020 7289 3063. paddington.theunionbar.co.uk; **Sawyers Arms**, 8-9 London St, W2 1HL. 020 7723 0685. greeneeking-pubs.co.uk; **The Pride of Paddington**, 1-3 Craven Rd, W2 3RF. 020 7402 2156. theprideofpaddington.co.uk; **Vela Brasserie**, Sale Place, W2 1PH. 07389 715808. velabrasserie.co.uk.

... THE TASTE OF THE SEA

Craving for crustaceans? Then book a table on the sunny alfresco deck of London Shell Co's static boat, **The Grand Duchess**. The owners also run its neighbour, **The Prince Regent**, which cruises from Paddington Basin to Camden and back at lunchtime on the weekend and over dinner from Wednesday to Saturday. Its menu changes daily, but you can bank on freshly caught British seafood. If your budget doesn't stretch that far, order the sambalsquid at **Satay House**, or pop into **Micky's Fish & Chips** off Praed Street for its signature dish and eat by the canal. **The Summerhouse's** waterside terrace is ideal for more special occasions, as you can order

platters of prawns, oysters and popcorn shrimp.

The Grand Duchess, Sheldon Square, W2 6PY. 07553 033636. londonshellco.com; **The Prince Regent**, Sheldon Square, W2 6PY. 07553 033636. londonshellco.com; **Satay House**, 13 Sale Place, W2 1PX. 020 7723 6763. satayhouse.com; **Micky's Fish & Chips**, 29 Norfolk Place, W2 1QH. 020 7723 2384; **The Summerhouse**, opposite 60 Blomfield Rd, W9 2PA. 020 7286 6752. thesummerhouse.co.



... SWEET INDULGENCE

Spring Street is the place to be if you want to indulge your sweet tooth. Top marks go to newcomer **Hayat**, which means life in Turkish. It serves flaky baklava drenched in honey and scattered with crushed pistachios, which you can eat outside in the sun with a cup of tea on its tiled terrace.

Alternatively, the patisserie **Mille** dishes up delicate yet dinner plate-sized macarons, cakes made up of multiple layers of crêpes and Asian-inspired treats – think purple potato mousse, dainty pastries flavoured with the sweet root vegetable taro, gooey green tea brownies and soy and mocha trifles. Meanwhile, **Bonne Bouche** on Praed Street has been the place to go to for party-pleasing desserts for more than 50 years. Enjoy toothsome delights such as tiramisu, a traditional German *brezelo* (pretzel) – crispy on the outside, soft on the inside. You can also order apple pie

and a generous slice of gateaux if you've got something to celebrate. **Hayat**, 6 Spring St, W2 3RA. 020 7402 7265. hayatrestaurant.co.uk; **Mille**, 8a Spring St, W2 3RA. 020 7018 7667. patisseriemille.com; **Bonne Bouche**, 129-131 Praed St, W2 1RL. 020 7724 5784. bonnebouche.co.uk.

Treat time



DRINK

Summer in the city

After alfresco drinks with a summer vibe? With canalside bars, rooftop clubs and beer gardens, Paddington's got you covered. Here are our top 15 spots

WATERSIDE WONDERS

Deadlines, childcare or your flight home suddenly seem far away when you're sipping a spritz in the sun, watching ducks leaving trails of ripples behind them. Fortunately, bars line Paddington's Grand Union Canal, beginning in Paddington Basin.

After a vegan pint at **BrewDog**, amble along the canal path for drinks aboard **Darcie & May Green**, which serves cocktails as spirited as its pop art exterior.

Smith's Bar & Grill is a little further along. If you're celebrating, book its new bottomless brunch on Fridays and Saturdays and sup Bellinis on its waterside terrace.

If Smith's is fully booked, then try the orange wines at **Vagabond**, a few doors down. With its notes of elderflower and bergamot, Vagabond Winery's 2021 Dios Mio – Bacchus is as summery as a wildflower meadow. **The Union** also prides itself on its Old World wines, but if you prefer, you can end your evening over fig marmalade cocktails at **The Waterway**. **BrewDog**, Harbet Rd, W2 1AJ. brewdog.com; **Darcie & May Green**, Sheldon Square, W2 6DS. 020 3935 9045. daisygreenfood.com; **Smith's Bar & Grill**, 25 Sheldon Square, W2 6EY. smithsbarandgrill.co.uk.

uk; **Vagabond**, 6a Sheldon Square, W2 6EZ. 020 4599 8611. vagabondwines.co.uk; **The Union**, Sheldon Square, W2 6EZ. 020 7289 3063. paddington.theunionbar.co.uk; **The Waterway**, 54 Formosa St, W9 2JU. 020 7266 3557. thewaterway.co.uk.

IN HIGH SPIRITS

When it comes to rooftop bars, Paddington hits the high notes. For drinks with a city vibe, watch the world go by over a bloody Mary or two on the balcony of

The Pilgrim boutique hotel. Larger groups should make for **Skylark Roof Garden**. Perched on the 10th

floor of an office building, its views stretch across the city, while sunshine-yellow parasols, flowerbeds and stripy blue and white cushions give it a beachy vibe.

The beach is closer than you think – just next door in fact. Themed around the Mexican resort of Tulum, the two-storey bar and street food hub **Pergola Paddington** features a sand pit, cabanas and Acapulco chairs – so tequila shots are the order of the day here.

The Pilgrim, 25 London St, W2 1HH. thepilgrim.com; **Skylark Roof Garden**, 4 Kingdom St, W2 6BD. skylarkroofgarden.co.uk; **Pergola Paddington**, 5 Kingdom St, W2 6PY. pergolapaddington.com.



Smith's Bar & Grill



SECRET GARDENS

Paddington is blessed with beer gardens – you just need to know where to look. Tucked between offices, **Prince of Wales'** garden is hidden in plain sight. It's a popular spot for after-work drinks; order a jug of Pimm's and bag one of the picnic tables beneath the hanging baskets. **Fountains Abbey** is another alternative for an alfresco catch up, as its canopy shelters picnic tables, which are spruced up with cascading blooms.

Prefer somewhere more intimate? Then seek out **Roseate House London**, a boutique hotel near Hyde Park. Its cream townhouse façade conceals a little-known courtyard garden frequented by the hotel's guests and in-the-know locals who visit for



BrewDog



Darcie & May Green



Huckster



The Pilgrim's terrace



Pergola Paddington



Skylark Roof Garden



The Waterway

its cocktails. Alternatively, swing by **Hotel Indigo's** Garden Terrace, a deck illuminated by warm lighting which opened in 2022. *Prince of Wales*, 2 Cleveland Terrace, W2 6LH. 020 7706 7040. princeofwalespaddington.co.uk; *Fountains Abbey*, 109 Praed St, W2 1RL. 020 7723 2364. greeneking-pubs.co.uk; *Roseate House London*, 3 Westbourne Terrace, W2 3UL. 020 7479 6600. roseatehotels.com; *Hotel Indigo*, 16 London St, W2 1HL. 020 7706 4444. indigopaddington.com.

TOP TERRACES

Vases of flowers, strings of light bulbs and plump cushions are all signs of an inviting terrace, and you'll find all three in Paddington.

One of the area's top picks has to be **Ask Italian**, which is framed by an arch of lemon trees and a stripy green canopy. Sit at a table nearby and sip its

new Lemon Drop spritz, which is a blend of local gin, Sanpellegrino limonata and Prosecco.

Sawyers Arms and the airline-themed sports bar **The Sussex Arms** are just one street away. On sunny evenings, sip a pint on The Sussex Arms' alfresco terrace or sit beneath Sawyers Arms' hanging baskets.

Huckster also has a seating area outside, which is shaded by office buildings. The hipster bar and street food hub's outdoor tables overlook a tranquil landscaped garden which winds down Kingdom Street. *Ask Italian*, 41-43 Spring St, W2 1JA. 020 3302 0915. askitalian.co.uk. *Sawyers Arms*, 8-9 London St, W2 1HL. 020 7723 0685. greeneking-pubs.co.uk; *The Sussex Arms*, 21 London St, W2 1HL. 020 7723 1026. sussexarms.com; *Huckster*, 4 Kingdom St, W2 6BD. hucksterlondon.co.uk.

Tag us in your summer pics of Paddington

#ExplorePaddington ✉ magazine@paddingtonnow.co.uk
 @inpaddington inpaddington inpaddington

COCKTAIL © SHUTTERSTOCK/SUTUS BAR & GRILL © THOMAS ALEXANDER HUCKSTER © HUCKSTER PERGOLA PADDINGTON © PERGOLA PADDINGTON FOUNTAINS ABBEY © PADDINGTON NOW BISTRO THE PILGRIM'S TERRACE © SKYLARK ROOF GARDEN © NATHAN KAYELL THE WATERWAY © THE WATERWAY DANCIE & MAY GREEN © THE PADDINGTON PARTNERSHIP BREWDOG © THE PADDINGTON PARTNERSHIP

GIVE

Community spirit

Whether you live or work in Paddington or are just visiting, chances are you've benefited from a friendly face such as a stranger helping you with directions, or a local litter picker waving good morning. Meet the people behind those smiles and discover how you can repay their kindness



TAKE HEART

As the beating heart of W2, Paddington Central is committed to giving back to the community. That's why it set up the Paddington Central Community Fund in 2021 – so its businesses can donate to community organisations via The London Community Foundation.

The result? Donors such as the developers British Land and CC Land, fintech firm Finastra, internet security company Trend Micro and the non-profit organisation Vertex Foundation – which helps people with serious diseases – raised £50,000 in the first fundraising round.

Thanks to them, Paddington Arts, Middle Eastern Women and Society Organisation, Hammersmith Community Garden and Marylebone Bangladesh Society received funding for after-school clubs, English classes for migrants and a day trip for older people, which impacted the lives of more than 400 Londoners. Unfold also benefited, using the £9,980 it received to mentor 40 asylum seekers in Westminster. paddingtoncentral.com.

CLEAN LIVING

The people of Paddington were among a billion others who took part in eco initiatives around the world in April to honour Earth Day, an annual event that champions the importance of protecting our eco system. Eighty two volunteers from 14 local companies removed 11 buckets of litter from the water around Paddington Basin. The volunteers' two canine captains gave a woof of approval. thisispaddington.com.

BURSTING WITH PRIDE

Join the people of Paddington in taking pride in their shop fronts and doorways on 26 June. Sweep your entrance, plant some blooms and join PaddingtonNow BID in a community litter pick to tidy up the streets. paddingtonnow.co.uk.

BEE KIND

Keen to do its bit, in May the office building The Point installed beehives on its roof, and will donate the honey to its customers. Meanwhile, The Prince of Wales is selling honey made from its four rooftop beehives. Proceeds go to the mental health charity MIND and Marie Curie, which supports people who are terminally ill. *The Point*, 37 North Wharf Rd, W2 1AF. 020 7813 7931. thepointpaddington.com; *The Prince of Wales*, 2 Cleveland Terrace, W2 6LH. 020 7706 7040. princeofwalespaddington.co.uk.



A HELPING HAND

Searching for more meaning in your life? Then consider volunteering. Each year, The Paddington Partnership's community programme places 1,500 volunteers from local businesses into 50 charities, schools and community groups. Companies subscribe annually, while new teams can pay as you go. As well as offering IT support and leading mock interviews, volunteers may redecorate community centres or enhance play areas. It's not all hard work – volunteers also host quizzes to help other people keep loneliness at bay.

Events took place to mark King Charles' big day in May. Colleagues from Sony Pictures, Derwent London and Tapestry in the Brunel Building hosted afternoon tea – complete with sausage rolls, Scotch eggs, royal bingo and a patriotic sing-a-long – for 40 guests at Housing 21's Penfold Court complex on Church Street. Marks & Spencer's employees meanwhile prepared a Coronation-themed lunch for 30 at the retirement home, which included cucumber sandwiches, Eton mess, scones and cupcakes – plus the chance to win royal-themed boxes of tea and biscuits. Both companies have got the volunteering bug – and are planning more events in the coming months.

To volunteer corporate staff, email volunteer@thisispaddington.com. If you'd like to volunteer as a resident, please email info@qonewestminster.org.uk.

ROYAL
LANCASTER
LONDON

LET'S BE FRIENDS

Neighbours enjoy
20% off dining*

**excludes Tony Page
at Island Grill*



Come and discover our restaurants and bars

From authentic, award-winning cuisine at Nipa Thai to an indulgent Afternoon Tea or expertly-crafted cocktails in our relaxed Lounge Bar; there's always something to savour at Royal Lancaster London.

020 7551 6000 | dine@royallancaster.com | royallancaster.com

CHANGE



Paddington Square seen
above Paddington Station

Civic centre

They say change is the only constant in life, and that's certainly true in Paddington. Discover more about the area's future, from a soon-to-launch public piazza to an amphitheatre that's been transformed

As the home of a Georgian canal and Victorian railway terminus, Paddington has long been associated with people from all walks of life coming and going.

But it's not just its people that have been changing places – its landscape has been changing, too.

Over the past 20 years, contemporary developments such as Merchant Square and Paddington Central have transformed the neighbourhood.

When the area's latest development, Paddington Square, opens this year, it will be the capital's newest landmark. It promises to revive the area around the south side of Paddington Station.

Designed by Renzo Piano Building Workshop – the team behind The Shard in London Bridge – the 18-storey building features a transparent glazing façade to enhance the incredible views of London's skyline and maximise daylight throughout the building.

Beneath the property there will be a new, spacious ticket hall for the Bakerloo line. This, along with step-free access to all levels, promises to revolutionise travellers' experience at Paddington.

A two-storey shopping centre will also sit beneath the building, home to 40 shops, cafés, bars and restaurants opening in autumn. Restaurants will line The Street behind the Mercure Paddington hotel as well.



PADDINGTON SQUARE AND PADDINGTON STATION © THE PADDINGTON PARTNERSHIP.
PADDINGTON SQUARE © HUFTON+CROW; THE BOX © BRITISH LAND

Two transparent, scenic lifts will whisk diners from The Street to a rooftop restaurant on the building's 17th and 18th floors, which will feature a leafy terrace overlooking Hyde Park and Westminster.

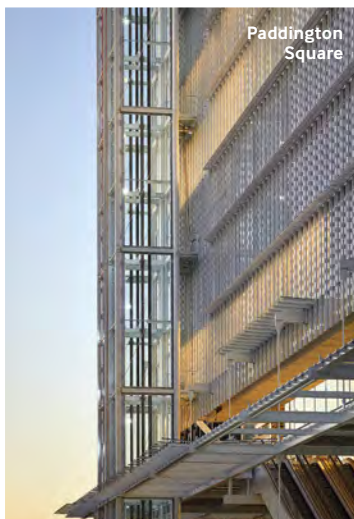
The mixed-use building's 14 remaining floors will be used as offices, which were largely completed at the end of 2022.

They will be the new home of the financial services firm Capital Group, the sustainable packaging brand DS Smith and the home improvement company Kingfisher. There will also be a 1,394sqm space on level two, known as The Exchange, which forms the social hub of the building.

Outside, a new 1.35-acre public square the size of 20 tennis courts will be enhanced with seats, trees and permanent artworks to encourage visitors to linger. The works include a freestanding monumental 3D abstract work by Ugo Rondinone and a photographic installation featuring and celebrating the NHS service's workers by Catherine Yass.

It's all change over on the Paddington Central campus, too. Work began on revamping the Sheldon Square amphitheatre in April 2022, which is now open in time for summer.

Visitors will notice its new, curved seating and flowing lines, while regulars will appreciate the increase in seating



capacity – making it that bit easier to find a sunny spot in which to eat your lunchtime sandwich.

In addition to the trees that line the amphitheatre's canalside, a water feature and more than 40 perennial blooms and shrubs have been added – and not just for aesthetic reasons. The new elements will increase biodiversity and improve air quality, too.

A larger performance space will also be welcome, allowing for regular public events such as free Wimbledon or film screenings in the summer.

The public are at the heart of this refurbished civic square, so it's only right that it's accessible to all. That's why you may notice a new ramp, textured paving, handrails and improved lighting – so everyone can listen to the trickle of water, watch tennis champ Emma Raducanu ace a match or inhale the sweet aroma of the new flowers.

Flowers aren't the square's only source of colour, as Adam Nathaniel Furman's

new art wall, "Abundance", will soon arrive on the South Walkway.

Elsewhere in Paddington Central, British Land has begun to transform the space beneath 5 Kingdom Street into a new distribution centre.

The plans were given the green light after British Land commissioned research by the Centre for London and University College London about the demand for last-mile deliveries in city centres.

Dubbed The Box, the 11,240sqm logistics hub will mean HGVs and vans arriving into London will be able to unload their goods on to smaller electric vehicles and cargo bikes – which will deliver them to recipients in central London.

Really, the initiative is a no-brainer, as it will make roads in zone 1 less congested and therefore safer. Vans have been struggling to deliver parcels on London's narrow roads for decades, and cargo bikes are 1.6 times faster according to a report co-written by the e-cargo bike logistics' company Pedal Me and the University of Westminster – so we can all expect to receive our deliveries quicker.

By removing 100 large vans from Westminster each day, the game-changing logistics hub will also improve London's air quality and slash the city's carbon emissions, with research indicating that it will save triple the amount of carbon which Hyde Park's trees absorb.

The project will create 500 new jobs and training opportunities, too.

Construction is expected to finish in 2026, and it's part of a wider plan for logistics in London – so in the words of the American singer/songwriter Sam Cooke, *A Change is Gonna Come*. Paddington Square, W2. Shops 07919 301381, restaurants 07557 449633. paddingtonsquare.co.uk. Paddington Central, W2 6AE. paddingtoncentral.com; 5 Kingdom St, W2 6BD. 020 7486 4466. britishland.com.



#ExplorePaddington
@inpaddington
inpaddington
f inpaddington
magazine@paddingtonnow.co.uk

STAY



Sweet dreams

Whether you're in London for business, a night out with friends or to celebrate an anniversary, Paddington has a place for you. Here's our pick of the area's dream sleeps

BEST FOR: A HEALTHY BREAK

Waking up in crisp white sheets with sunlight flooding through Victorian windows, taking a Pilates class, eating vegan dishes or reading a book in a mid-century rattan chair are just some of the simple delights you can experience when staying at **Inhabit**.

Its 88 rooms, library and restaurant are decked out in soothing Scandi-cool greys, making them as relaxing as its wellness centre, Inhale. Staying here will be good for you – and for others too. In January 2023, the hotel was awarded a B Corp certificate because of its commitment to be a force for good, reflected in its environmental initiatives, mindfulness training for staff and work with social enterprises. 25-27 Southwick St, W2 1JQ. 020 7723 7723. inhabithotels.com.

BEST FOR: A ROMANTIC WEEKEND AWAY

Built in 1842 as three townhouses, **Roseate House London** is now a Grade II-listed boutique hotel with 48 rooms and suites. If you're celebrating, order afternoon tea in its courtyard garden, cocktails in The Hyde restaurant and bar, or book its new private dining or meeting room, Club Privé, which seats 10. Smart and stylish, it features velvet chairs in earthy tones, floor-to-ceiling

curtains and abstract and surreal works by the Delhi-based duo Thukral & Tagra, who are inspired by the gaming world. 3 Westbourne Terrace, W2 3UL. 020 7479 6600. roseatehouselondon.com.

BEST FOR: A STYLISH STAY

Roman-style white columns and a gleaming marble hallway greet you as you arrive in **Prime Inn**. The grand townhouse is nestled on leafy Sussex Gardens, which is just a short stroll from Norfolk Square Gardens. Inside,

matching bedside lamps and piles of cushions on the bed give the hotel a homely feel, while large Victorian windows make the bedrooms brim with light on summery mornings. 292 Sussex Gardens, W2 1UH.

BEST FOR: A BUSINESS TRIP

Large bedroom windows overlooking Norfolk Square Gardens and murals of local landmarks such as Little Venice remind you that you're in Paddington when you stay at **Hotel Indigo**. Part of





Hotel Indigo

Have you stayed at one of these hotels?

#ExplorePaddington @inpaddington

inpaddington inpaddington

magazine@paddingtonnow.co.uk



Hotel Indigo



St David's Hotels

BEST FOR: PANORAMIC VIEWS

A sunshine-yellow mural depicting illustrations of Big Ben and The Shard provide a pop of colour in the lobby of the new 393-room **Premier Inn Paddington**.

But for the best views of London's landmarks, you'll want to book a room on one of the upper levels of this 19-storey hotel.

Just a saunter away from Paddington Basin, the property is ideal for weekend breaks, business travellers or locals who are keen to try Bar +Block Steakhouse, which is decorated like a log cabin.

Just want a drink? Then pop in and take a stool at its copper-coloured countertop. *North Wharf Rd, W2 1LF. 0300 373 0052. premierinn.com.*

the InterContinental Hotel Group, the four-star boutique hotel's rooms are decorated in mulberry and autumnal hues, and come with a voice-controlled AI concierge with interactive touchscreen. In addition to four meeting rooms, it has a 24-hour fitness centre, a Bella Italia restaurant and a terrace with potted plants and latticed screens for privacy. *16 London St, W2 1HL. 020 7706 4444. indigopaddington.com.*

BEST FOR: AN AFFORDABLE TREAT

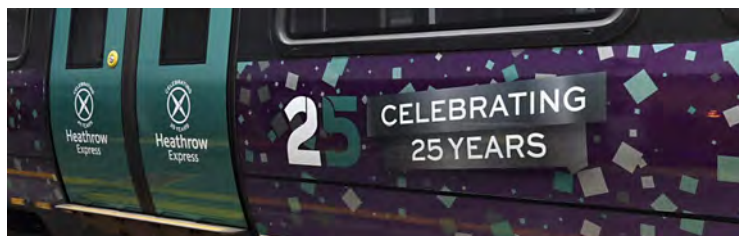
Originally four Victorian townhouses and then a bed and breakfast, the Grade II-listed **St David's Hotels** is proud to reveal the results of its latest transformation, which is set to be complete in June. White walls have been given a pop of colour with rose pink wallpaper, while mustard tasselled lampshades cast a soft glow over the beds. But some things will never change: its original stained glass, high ceilings, cornicing and fireplaces as well as the wrought-iron Juliet balconies and views of Norfolk Square Gardens. *14-20 Norfolk Square, W2 1RS. 020 7723 3856. stdavidshotels.com.*

BEST FOR: A BUDGET BED

Sleep easy. If you're satisfied with a comfy bed and a quiet room, then you can look forward to spending a night in the affordable **easyHotel London Paddington**, which is currently undergoing a £1m refurbishment. *10 Norfolk Place, W2 1QL. 020 7706 9911. easyhotel.com.*

BEST FOR: CRASHING AFTER A NIGHT OUT

In London for a night out? Then book a room above the aviation-themed pub **The Sussex Arms**. Spread over three floors, its eight rooms have a kitchen, dining table and leather touches to bring warmth to the minimalist décor. Four of the rooms also have a sofa bed. *21 London St, W2 1HL. 020 7723 1026. sussexarms.com.*



AHEAD OF THE PACK

Heathrow Express has launched a series of films to honour its 25th birthday, as it has been whisking passengers between Paddington Station and Heathrow Airport since 1998. *The Luggage Diaries* celebrate its passengers and their precious luggage, from a cellist to a surfer and a horologist. Other passengers have carried everything from a didgeridoo to a sombrero and a cactus from Arizona. What's the strangest thing you've ever packed in your suitcase? Tell us on social media. To watch the films, search for *The Luggage Diaries* on YouTube. *heathrowexpress.com.*

5 MINUTES
WITH...

Paddington Square's developer

Meet Jonathan Ring, development director at Sellar, who is leading the project

If you had three wishes for Paddington, what would they be? More and better shops and restaurants, a new public square and a less crowded Bakerloo line perhaps?

Then you're not the only one. The developer behind Paddington Square, Sellar, is shaking things up outside Paddington Station.

The firm's development director, Jonathan Ring, specialises in mixed-use properties in central London. After heading up the over station developments for Crossrail, he joined Sellar to lead Paddington Square – a significant project that will transform the area around Paddington Station and affect W2's growth and development for decades to come.

For Jonathan, the future is now. Here he shares with us an insight into tomorrow's world.

Why did Sellar choose Paddington for such a landmark project?

Paddington has a rich history of commerce and innovation. The Grand Union Canal has connected the capital with the Midlands, facilitating trade, since the 1700s; Paddington Station was way ahead of its time when it was built, and now it's home to the Elizabeth line.

Yet the experience of exiting Paddington Station has long been poor and the area had few good quality shops. Paddington was seen as more of a place to pass through than a destination.

We saw an opportunity. We wanted to establish a new entrance to Paddington Station and gateway to London for

travellers from Heathrow. We did this by creating a new piazza with retail, dining and workspace, and a new ticket hall for the Bakerloo line with step-free access and more space to address overcrowding.

How did you adapt Paddington Square for the post-pandemic world?

We were midway through building Paddington Square when the pandemic hit. That afforded opportunities to



evolve the design in response to the evolution of working patterns and the increased demand for socially and environmentally conscious buildings.

We introduced touch-free access and a new social hub for office occupiers, and designed the offices with natural materials and plants. We have prioritised wellbeing, flexibility and collaboration to suit various working styles.

The project has circa 40 shops and restaurants, terraces and open spaces

so workers can choose how they spend their day. Being adjacent to one of London's best connected transport hubs minimises the need for secondary journeys while the canal and local parks provide leafy commuting routes. Paddington Square's 530 bicycle spaces, lockers and showers support cyclists and pedestrians.

Tell us about Paddington Square's public space

Our ambition is to make Paddington Square an outstanding place for people to work and visit, adding new life to the neighbourhood.

When you exit Paddington Station, you will see a 'levitating' building – Paddington Square. The building will appear to float above 1.35 acres of new public realm including a piazza, which will create a spacious entrance to the station. Enhanced with seating, trees and a wall of plants, the piazza will be inviting, accessible and enjoyable for all.

A pedestrian footbridge defines the entrance to the new Bakerloo line entrance, ticket hall and shopping centre.

There will also be shops and restaurants on street level that will be sheltered by the main building's canopy. They'll be brought to life with alfresco seating and public art, creating another dynamic public space that will become a destination in its own right.

Paddington Square will open in 2023. For more information, visit paddingtonsquare.co.uk.





Property Sales, Lettings & Management



Love Paddington?
Then Live here.



Scan For Properties



GRANGE LONDON

+44 (0)20 3019 6150 www.grange.london [@grange.london](https://www.instagram.com/grange.london)