



## Paddington

Market Intelligence  
Wednesday, 14 June  
16:30 – 17:15

Kay Buxton, Executive Director, Paddington Partnership (Chair)  
Ed Watson, Executive Director Growth, Planning & Housing, WCC  
Paul Williams, Director, Derwent London  
Tim Roberts, Head of Offices & Residential, British Land  
Andrew Scrivener, Chief Executive, European Land





@inpaddington

The Paddington Partnership



@inpaddington

The Paddington Partnership



@inpaddington

The Paddington Partnership



@inpaddington

The Paddington Partnership



City of Westminster

@CityWestminster





City of Westminster

@CityWestminster





# BRUNEL BUILDING

— Canalside —

@derwentlondon

DERWENT  
LONDON

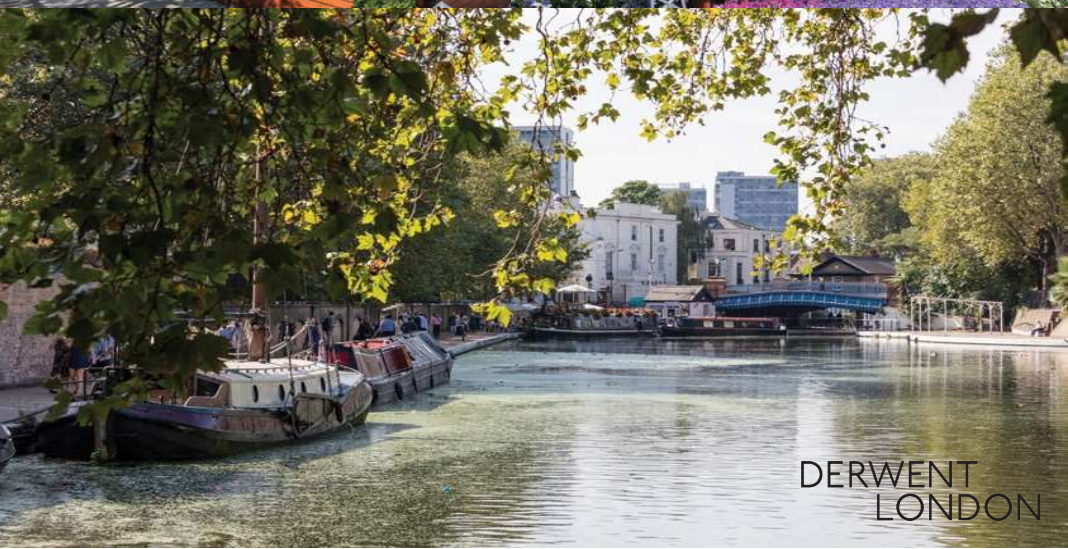


# BRUNEL BUILDING

— Canalside —

@derwentlondon

DERWENT  
LONDON



@derwentlondon

DERWENT  
LONDON



# BRUNEL BUILDING

— Canalside —



DERWENT  
LONDON



@derwentlondon





# 4 Kingdom + Street



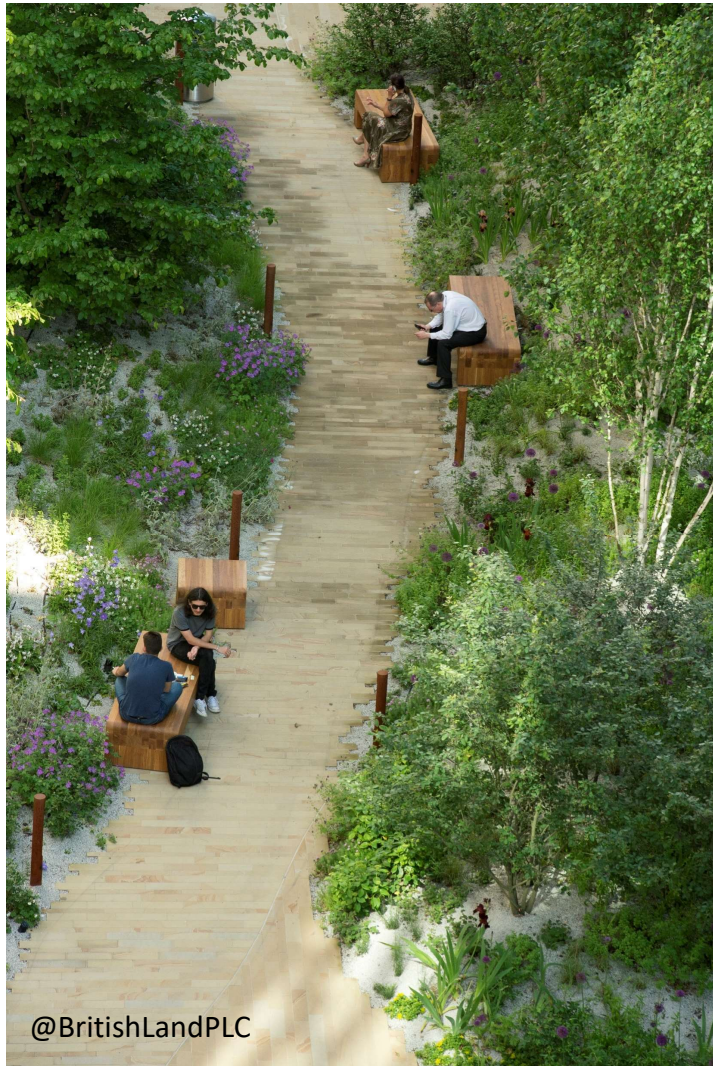
# Paddington Central



@BritishLandPLC







@BritishLandPLC

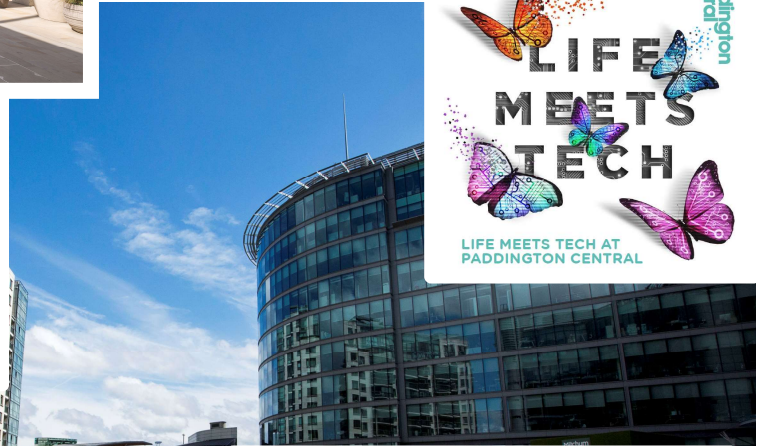


# Paddington Central

Paddington Central

LIFE MEETS TECH

LIFE MEETS TECH AT PADDINGTON CENTRAL





# Paddington Central



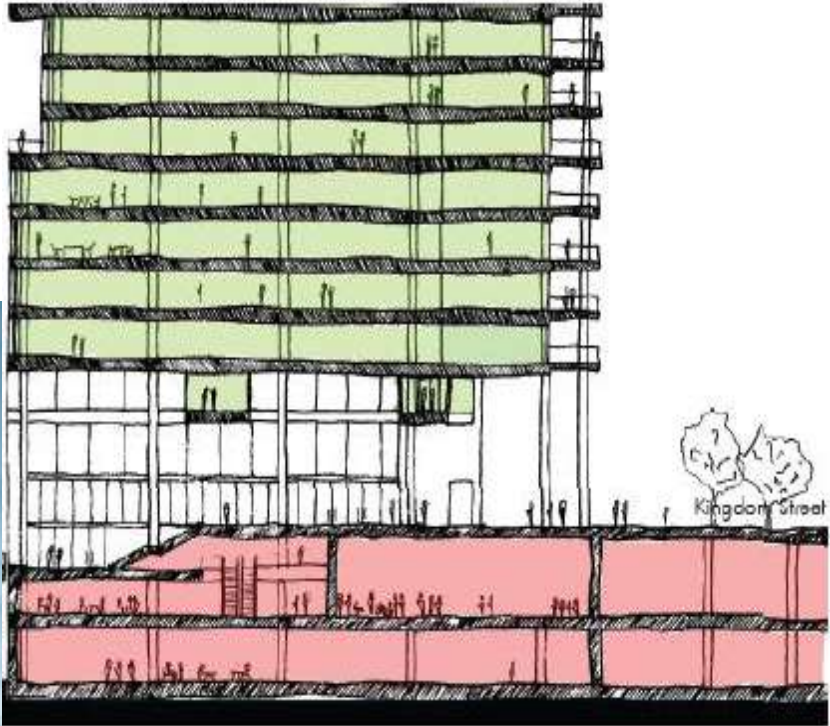
# Gateway Building



@BritishLandPLC



# 5 Kingdom Street and The Box





@merchantsgevent

Merchant  
Square  
Paddington

---

EuropeanLand



@merchantsqevent

Merchant  
Square  
Paddington  
EuropeanLand



Merchant  
Square  
Paddington

@merchantsqevent



173,000 sq. ft.

16 storeys

12,000 sq. ft. floors



@merchantsqevent

Merchant  
Square  
Paddington

EuropeanLand





@merchantsqevent

Merchant  
Square  
Paddington

EuropeanLand

# Paddington Opportunity Area Development Pipeline

- ① 5 Kingdom Street
- ② 4 Kingdom Street
- ③ Crossrail over site development
- ④ Brunel Building
- ⑤ Dudley House
- ⑥ Marylebone Boys' School
- ⑦ Paddington Exchange
- ⑧ Hub Paddington
- ⑨ North Wharf Gardens
- ⑩ 1 Merchant Square
- ⑪ 2 Merchant Square
- ⑫ 6 Merchant Square
- ⑬ West End Green/Paddington Green
- ⑭ Crossrail Paddington (Elizabeth Line)
- ⑮ 50 Eastbourne Terrace
- ⑯ The Cube
- ⑰ St Mary's Phase 1





## Paddington

Market Intelligence  
Wednesday, 14 June  
16:30 – 17:15

Thank you...

Kay Buxton, Executive Director, Paddington Partnership (Chair)  
Ed Watson, Executive Director Growth, Planning & Housing, WCC  
Paul Williams, Director, Derwent London  
Tim Roberts, Head of Offices & Residential, British Land  
Andrew Scrivener, Chief Executive, European Land

